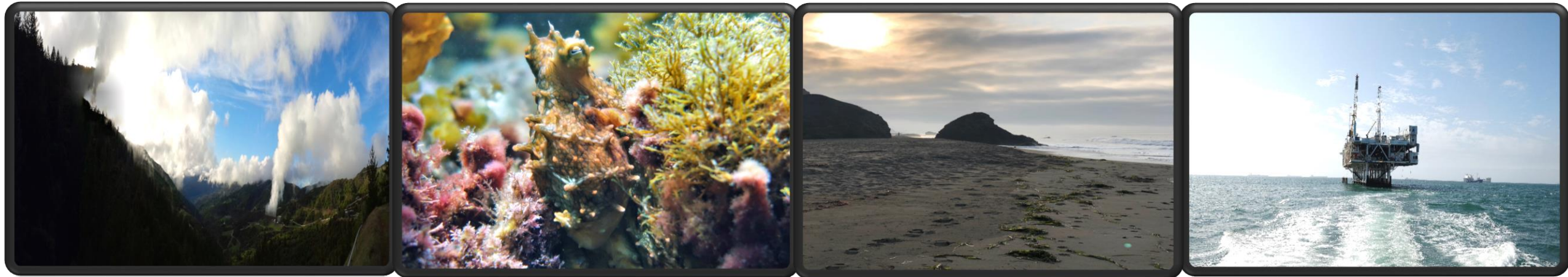


California State Lands Commission

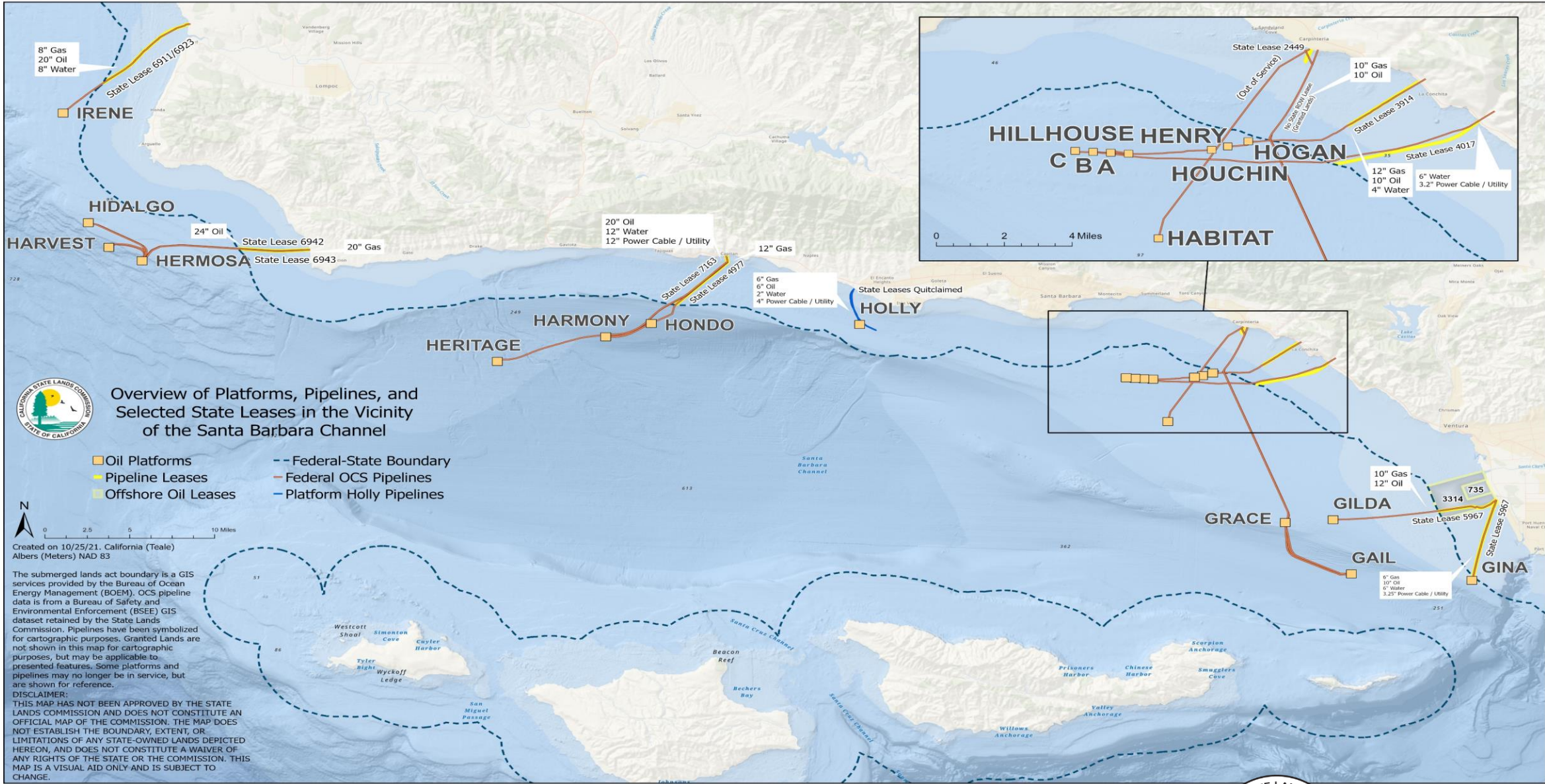
*Sustainable Public Land Management and Balanced Resource
Protection for Current and Future Generations*



Jennifer Lucchesi, Executive Officer, CA State Lands Commission
Senate Natural Resources and Water Committee
October 28, 2021

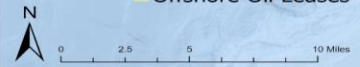
Serving the Public Trust Since 1938





Overview of Platforms, Pipelines, and Selected State Leases in the Vicinity of the Santa Barbara Channel

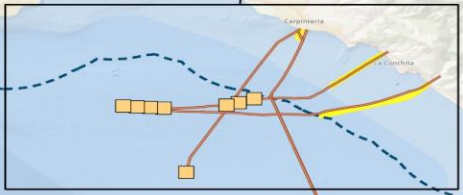
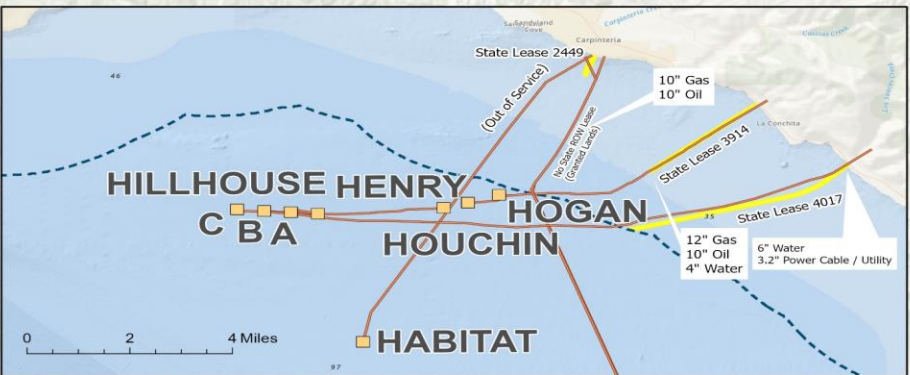
- Oil Platforms
- Pipeline Leases
- Offshore Oil Leases
- Federal-State Boundary
- Federal OCS Pipelines
- Platform Holly Pipelines

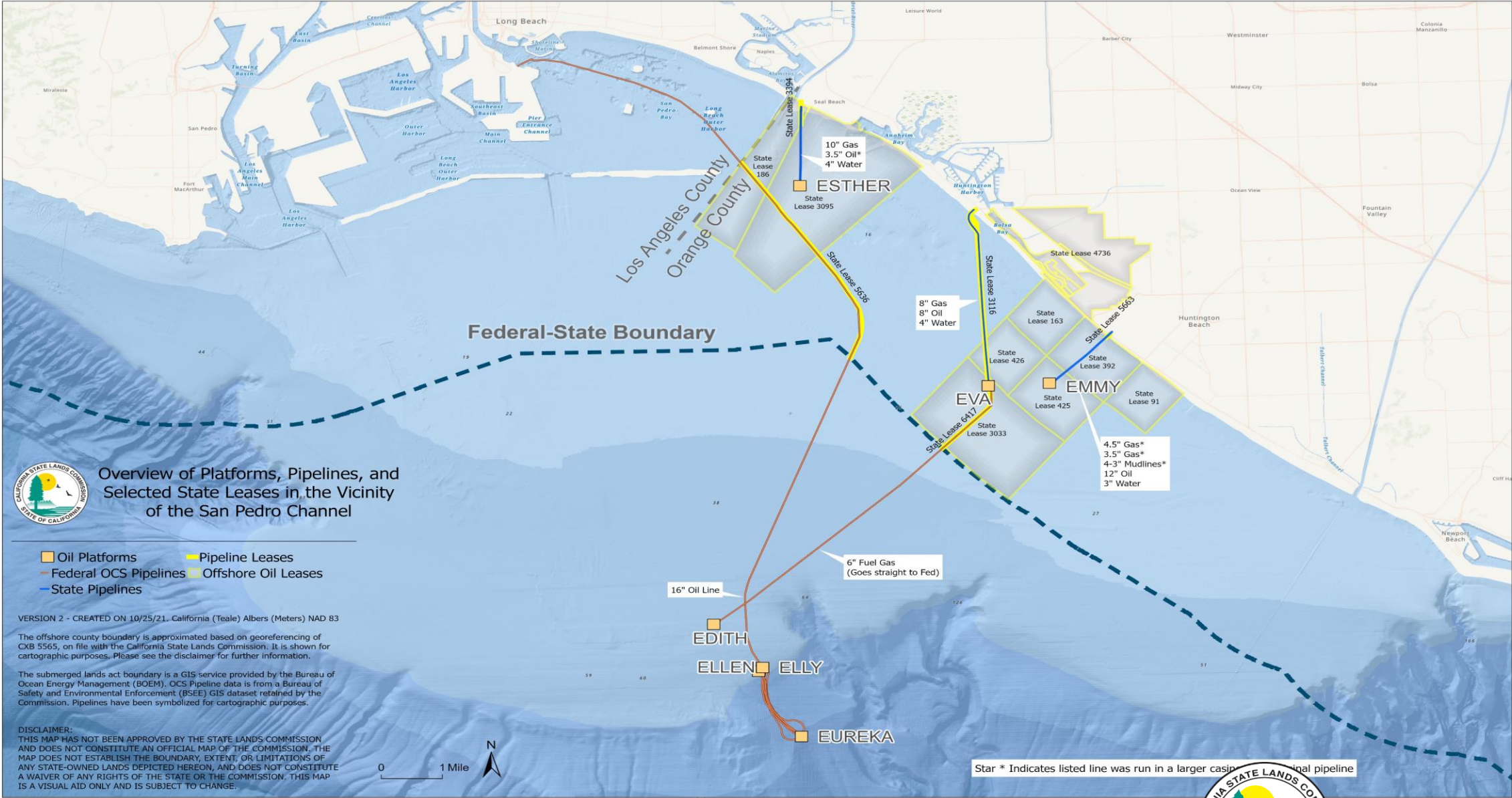


Created on 10/25/21. California (Teale)
Albers (Meters) NAD 83

The submerged lands act boundary is a GIS services provided by the Bureau of Ocean Energy Management (BOEM). OCS pipeline data is from a Bureau of Safety and Environmental Enforcement (BSEE) GIS dataset retained by the State Lands Commission. Pipelines have been symbolized for cartographic purposes. Granted Lands are not shown in this map for cartographic purposes, but may be applicable to presented features. Some platforms and pipelines may no longer be in service, but are shown for reference.

DISCLAIMER:
THIS MAP HAS NOT BEEN APPROVED BY THE STATE LANDS COMMISSION AND DOES NOT CONSTITUTE AN OFFICIAL MAP OF THE COMMISSION. THE MAP DOES NOT ESTABLISH THE BOUNDARY, EXTENT, OR LIMITATIONS OF ANY STATE-OWNED LANDS DEPICTED HEREON, AND DOES NOT CONSTITUTE A WAIVER OF ANY RIGHTS OF THE STATE OR THE COMMISSION. THIS MAP IS A VISUAL AID ONLY AND IS SUBJECT TO CHANGE.





Overview of Platforms, Pipelines, and Selected State Leases in the Vicinity of the San Pedro Channel

- Oil Platforms
- Pipeline Leases
- Federal OCS Pipelines
- Offshore Oil Leases
- State Pipelines

VERSION 2 - CREATED ON 10/25/21. California (Teale) Albers (Meters) NAD 83

The offshore county boundary is approximated based on georeferencing of CXB 5565, on file with the California State Lands Commission. It is shown for cartographic purposes. Please see the disclaimer for further information.

The submerged lands act boundary is a GIS service provided by the Bureau of Ocean Energy Management (BOEM). OCS Pipeline data is from a Bureau of Safety and Environmental Enforcement (BSEE) GIS dataset retained by the Commission. Pipelines have been symbolized for cartographic purposes.

DISCLAIMER:
 THIS MAP HAS NOT BEEN APPROVED BY THE STATE LANDS COMMISSION AND DOES NOT CONSTITUTE AN OFFICIAL MAP OF THE COMMISSION. THE MAP DOES NOT ESTABLISH THE BOUNDARY, EXTENT, OR LIMITATIONS OF ANY STATE-OWNED LANDS DEPICTED HEREON, AND DOES NOT CONSTITUTE A WAIVER OF ANY RIGHTS OF THE STATE OR THE COMMISSION. THIS MAP IS A VISUAL AID ONLY AND IS SUBJECT TO CHANGE.

0 1 Mile



Star * Indicates listed line was run in a larger casing than original pipeline



