

Oversight Hearing on Homelessness

Sharon Rapport, Corporation for
Supportive Housing



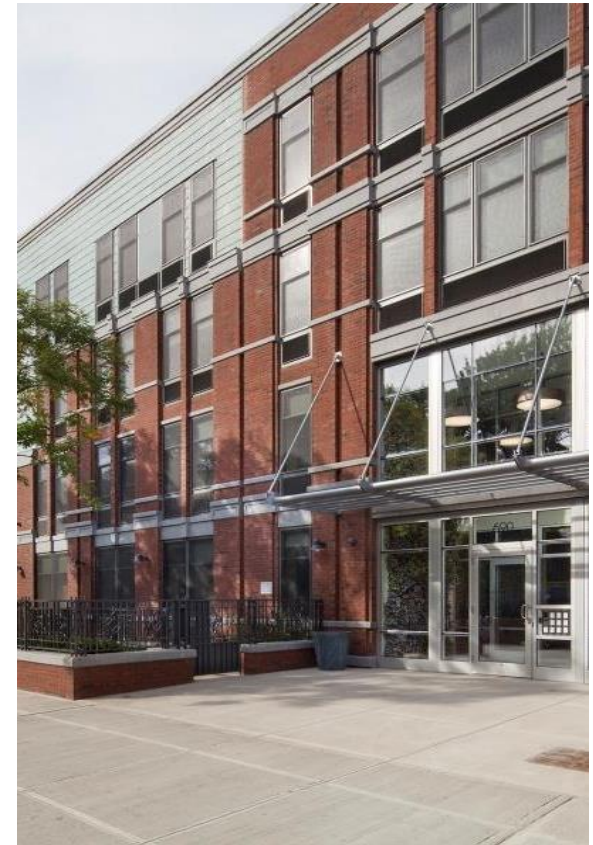
CSH Advances Housing Solutions That—



**Improve lives of
vulnerable people**



**Maximize
public resources**



**Build strong,
healthy communities**

State Role in Solving Homelessness: Help Californians Move into Permanent Housing



Make Up Gap in Affordable Housing



Fund Rental Assistance



Use Medi-Cal Benefit to Pay for Housing-Based Services

Tiny Homes, Sheds, Decreased Housing Standards are Not Permanent Housing



Substandard housing: Risk factor for homelessness

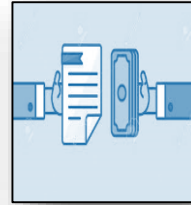
Ways to Fund Housing



Rental Assistance:
Private-market
landlords



Housing
authority or
intermediary
pays landlords



Incentives
to landlords



Service providers offer
services to tenants in
or near housing



Capital:
Loan/tax credits
to developers



Capital subsidies
to developers to
build apartments



**Operating
subsidies** to
operate
building



Service providers offer
services to tenants
promoting housing
stability in apartment

Need Medi-Cal Benefit to Fund Services

**100%
California-
Funded**

- Services funded by local & state mainstream sources

**10-50%
California-
Funded**

- Medi-Cal benefit with a supplemental payment for housing-based services



Outreach
& Engage-
ment

Housing
Navigation/
Landlord
Recruitment

Services
Promoting
Housing
Stability

Using Resources More Effectively: AB 1845 (L. Rivas) & AB 2329 (Chiu, Gloria)

State funding based on what level
of funding is possible, rather than
what is needed

Multiple state programs funding housing
& housing-based services

Multiple state-funded systems
discharging people from
institutional settings into
homelessness



Recipe for Homelessness

Income Inequality & Severe Housing Cost Burden



Systemic Racism

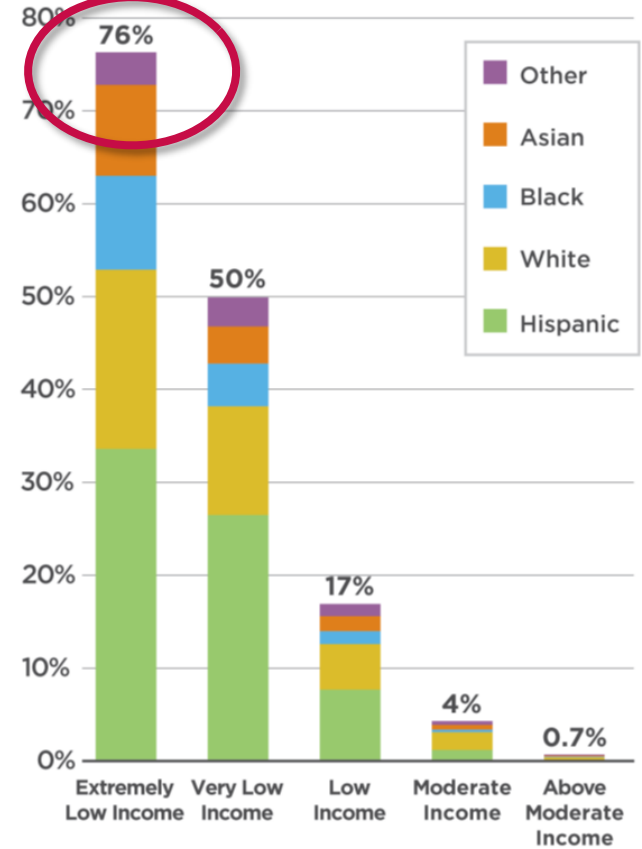


Homelessness



Overcrowding & Substandard Conditions

LOWEST INCOME HOUSEHOLDS ARE DISPROPORTIONATELY AND SEVERELY COST BURDENED

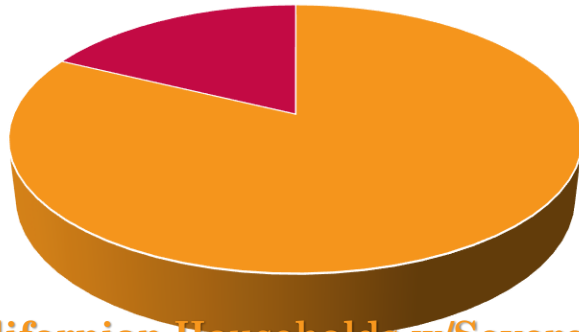


Source: NLIHC analysis of 2017 PUMS data.

*Severely cost burdened households spend more than 50% of their income towards housing costs.

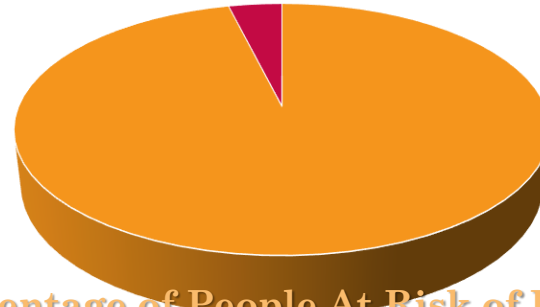
Vast Majority of People with Risk Factors Do Not Become Homeless

Extremely Low Income Californians with Severe Cost Burden



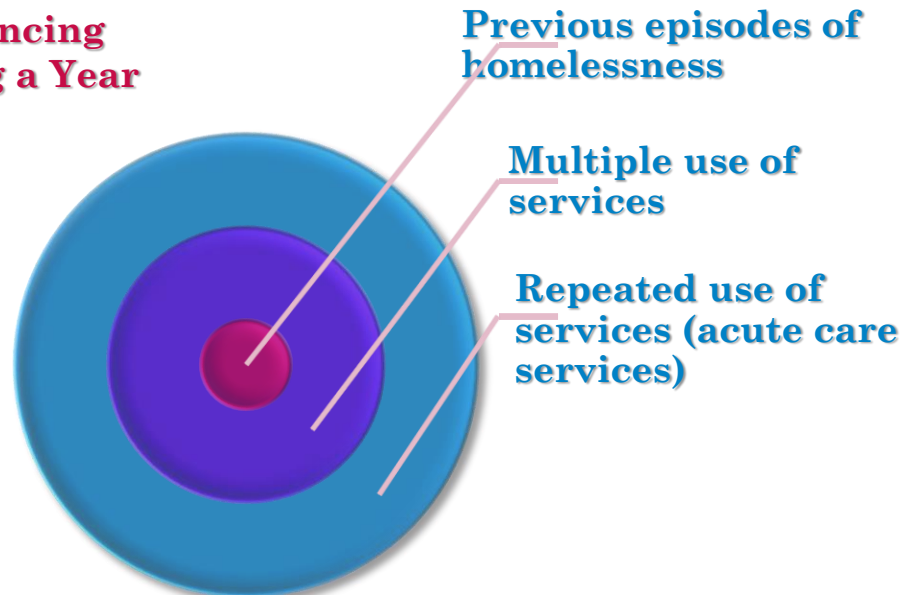
- Californian Households w/Severe Cost Burden Not Experiencing Homelessness
- Californian Households Experiencing Episode of Homelessness During a Year

Chicago Study on Prevention: Eviction Prevention



- Percentage of People At Risk of Eviction
- Percentage of People in Control Group Who Became Homeless

UCLA Policy Lab (Dec. 2019): Target prevention to those at greatest risk based on data



Preventing Discharges Into Homelessness



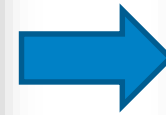
Use Medi-Cal to pay for services to connect people to and sustain people in housing, offer housing navigation & assisted living waiver services for those with acute disabilities.



Use corrections resources to prevent discharges into homelessness through housing navigation & permanent housing.



Invest in housing and services for child-welfare-involved households experiencing homelessness, connect unaccompanied minors to CW services.



Sharon Rapport:

sharon.rapport@cshe.org

(323) 243-7424