

# Los Angeles County Metro

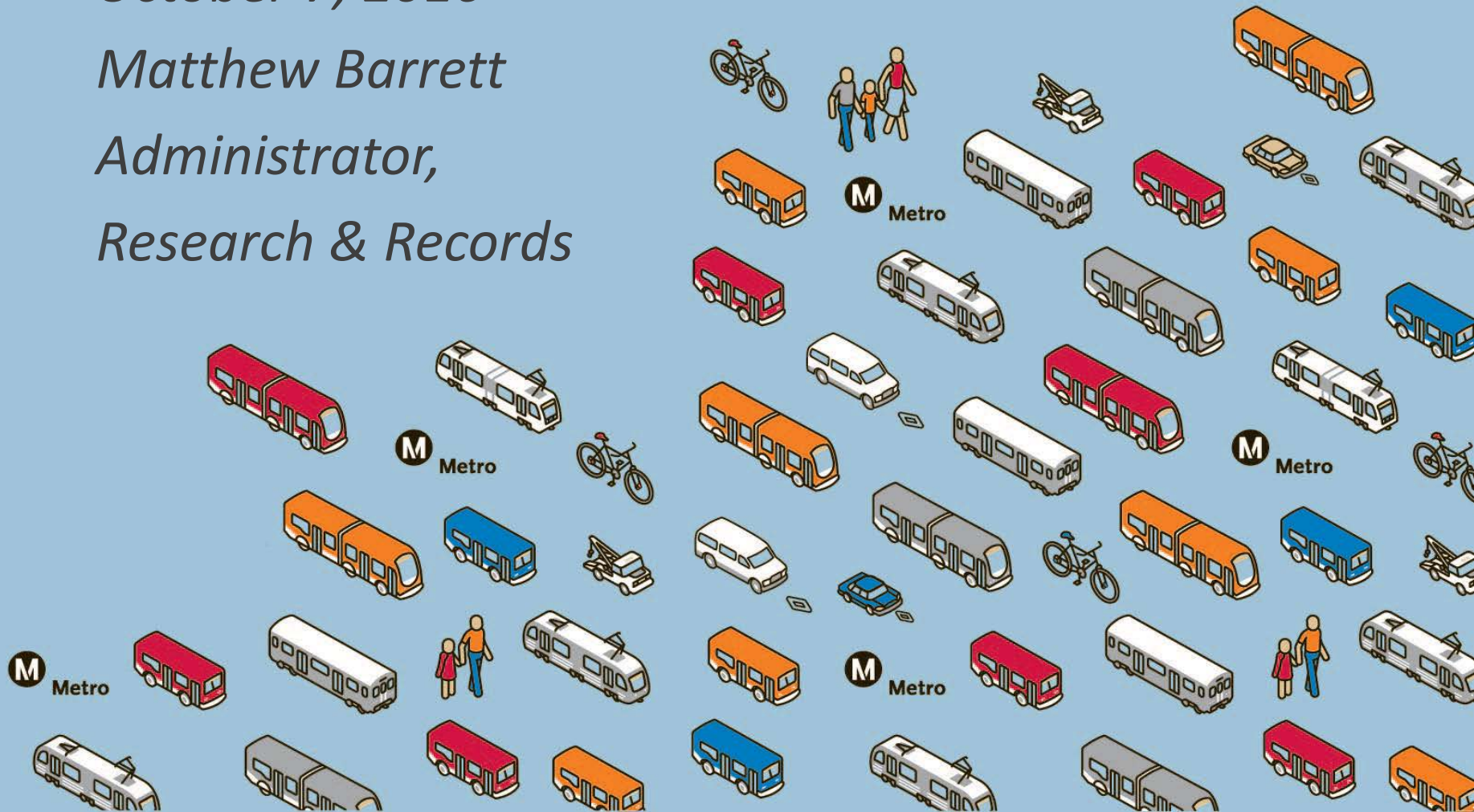
*How can SB 272 inventories be useful*

*October 7, 2016*

*Matthew Barrett*

*Administrator,*

*Research & Records*



# L.A. Metro Background

---

- FY17 Annual Budget = \$5.6 billion
- 9,776 total FTEs
- Planning, funding, construction and operation of transportation programs throughout LA County, + regional coordination
- Centralized Records Management Center housed with Southern California's largest (and only) transportation research library and archive, under ITS, as a direct report to the CIO
- <http://records.metro.net>
- <http://metro.net/library>



# From <http://metro.net/records>

Outreach: Posted key elements of the legislation on our website along with the inventory.

Screenshot:

## System Inventory - Open Data - CA Senate Bill 272, Section 6270.5 of the California Public Records Act

### Enterprise System

A software application or computer system that collects, stores, exchanges and analyzes information that the agency uses that is both of the following:

- > A multi-departmental system or a system that contains information collected about the public.
- > A system that serves as an original source of data within an agency.

An Enterprise System **does not** include any of the following:

- > Information Technology security systems, including firewalls and other cybersecurity systems.
- > Physical access control systems, employee identification management systems, video monitoring and other physical control systems.
- > Infrastructure and mechanical control systems, including those that control or manage street lights, electrical, natural gas or water or sewer functions.
- > Systems related to 911 dispatch and operation or emergency services.
- > Systems that would be restricted from disclosure by Section 6254.19.
- > The specific records that the information technology system collects, stores, exchanges or analyzes.

#### More Information

Metro's Records Management Policies  
Records Services  
Contact Us

#### Search Tools

Library Catalog  
Board Archives  
TRIS  
TLCat

#### Also On Our Site

[View the library's site categories](#)

#### Archives

Our historic legacy of photographs, manuscripts, and other items document the important and unique role of transportation in Southern California history and culture

Link: [SB272 System Inventory Online](http://metro.net/records)



# Brief Timeline: Digital & Data Records Online

---

- 2003 – Board Archive (1952-present)
- 2004 – Employee Newsmagazines (1920-present)
- 2005 – Social Media/Blog sites for distribution
- 2006 – Photographs (1874 – present), Films, Video
- 2008 – Data Sets on <http://developer.metro.net>
- 2009 – Records webpage, online request form
- 2010 – Digitized board audio files
- 2014 – Live webcasting/archiving board meetings
- 2015 – Granicus/Legistar legislative management
- 2016 – NextRequest & Councilmatics, Google Fusion Tables, SB272 Inventory



Metro®





# How can SB 272 inventories be useful?

---

- Allows public to inform us of desired data sets online
- Encourages inter-governmental cooperation
- Drives both government & private innovation
- Supports academic endeavors & scholarly research
- Supports all levels of the business community
- Encourages solicited & unsolicited proposals/solutions
- Renews original 1968 commitment to transparency
- Can level the playing field between physical records and electronically stored information by giving the public similar access to data that state and federal courts currently have via E-Discovery laws





# How can SB 272 inventories be useful?

Host requested records/data sets online in an open access system like NextRequest.com. Show all requests, link to docs & data provided.

Screenshot:

The screenshot shows the 'Public Record Requests' page for the Metro Los Angeles County Metropolitan Transportation Authority (LACMTA). The page features a navigation bar with 'ALL REQUESTS', 'DOCUMENTS', 'ADMIN', and 'SETTINGS' options. A 'MAKE REQUEST' button is located in the top right corner. The main content area is titled 'Records' and includes the Metro logo. The text explains that the web portal helps users communicate with the LACMTA regarding public records, with previous requests and responsive documents available online. It also states that the platform is intended to facilitate public access to public records, which are held by the LACMTA pursuant to governing records retention schedules. On the right side, there are two orange buttons: 'SEARCH' and 'MAKE REQUEST'. Below the 'SEARCH' button, it displays 'Search 246 requests and counting.' Below the 'MAKE REQUEST' button, it says 'Make a new public records request.'

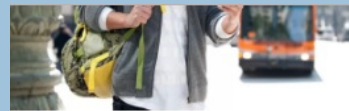


# How can SB 272 inventories be useful?

Define, host and showcase data sets

Example: developer.metro.net

Screenshot:



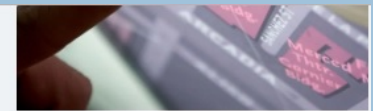
## Metro Bus & Rail Real-time Arrivals

Real-time vehicle position delivered via a RESTful web service in XML, JSON, and JSONP.



## Metro Bus & Rail GTFS Scheduled Data

Scheduled arrival for Metro Bus & Rail in General Transit Feed Specification.



## Metro Bus & Rail GIS Data

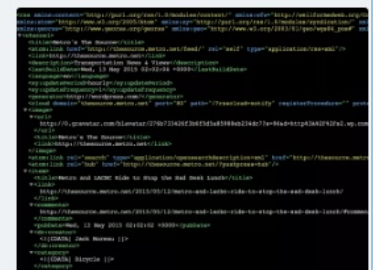
Shapefiles for Metro's Bus & Rail lines and Bus stops and Rail stations.



## Metro Right-of-Way GIS Data



## Metro Bike Share and Bikeways Data



## Metro.net Feeds

Keep up-to-date with Metro news and system info with our RSS

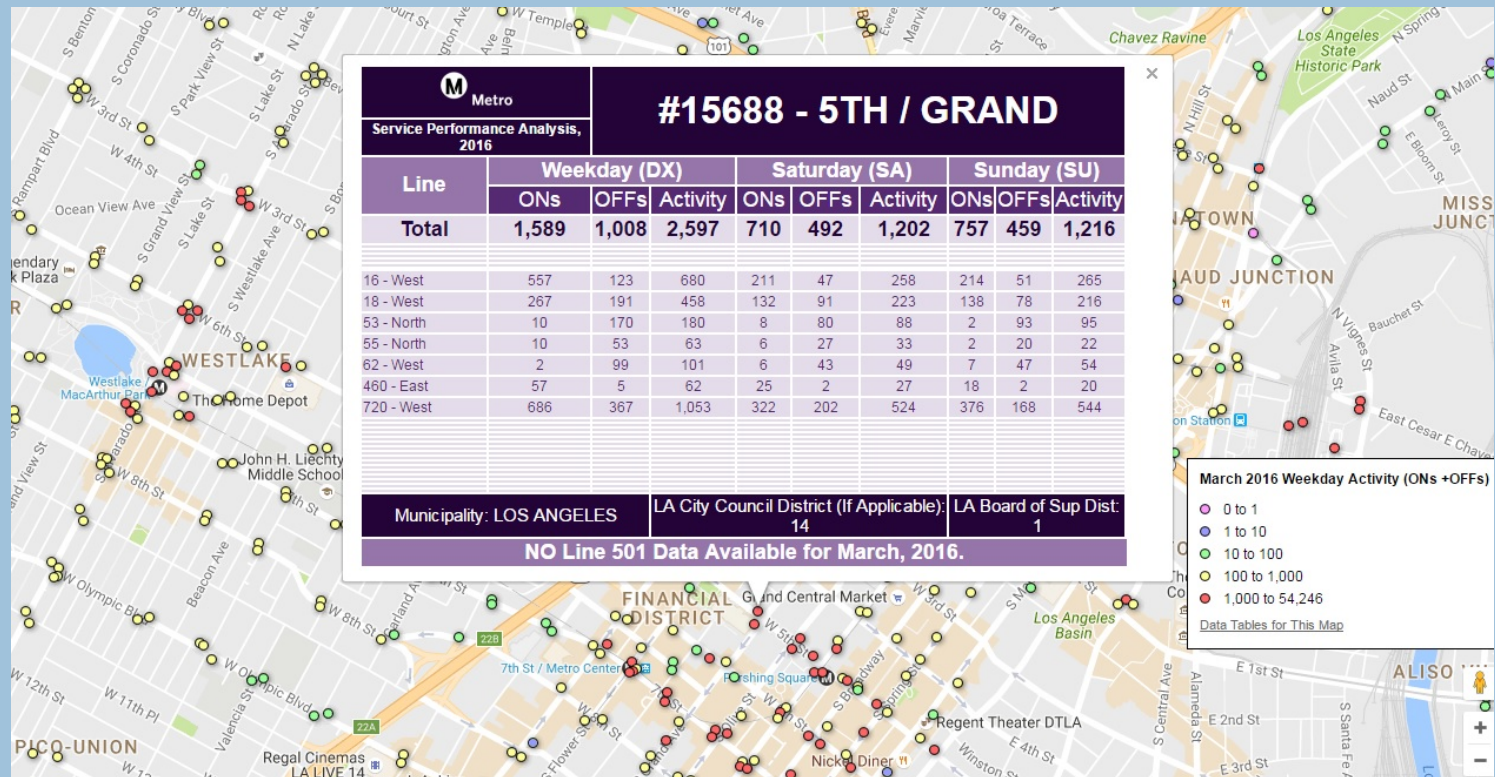


Metro®

# How can SB 272 inventories be useful?

Define and showcase data sets with visual tools  
 Example: Metro Ridership Data by stop/station

Screenshot:





# Thank you

---

