

Clogging California's Ocean With Plastics: Impacts on Marine Wildlife

Dr. Jeff Boehm | Executive Director

The Marine Mammal Center | March 20, 2019



Who we are



Who we are

First Responders

Veterinarians

Scientists

Teachers

Trainers

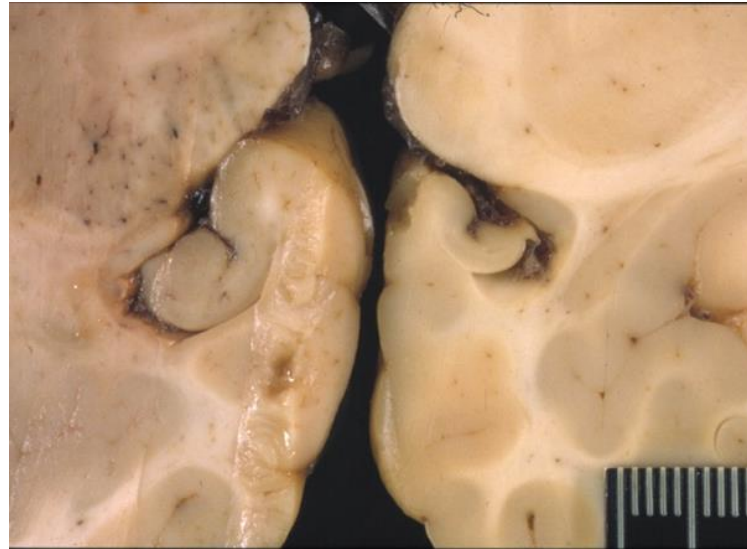
Communicators

Problem-solvers

Conservationists



Addressing Issues that Threaten our Oceans





The Marine
Mammal Center.



And Issues Are Evermore Urgent

the **guardian**



**NATIONAL
GEOGRAPHIC**



INDEPENDENT



Prevalence and Impact

“Ingestion of, and entanglement in, debris has been documented in **over 60% of all (dolphin and whale) species.**” (Fossi et al, 2018)

Over seven years “13 sperm whales stranded along the Italian coast, were necropsied and their stomachs were collected for dietary and marine litter. Marine debris was **found in 10 out of 13 specimens** and it was composed mainly of plastic.” (Fossi et al, 2018)

Prevalence and Impact

“...**Impacts arising from entanglement** can result in injury, drowning or strangulation, and **those from ingestion** (vary) from no discernible impact to blockage of the digestive tract, suffocation and starvation.” (Sheavly and Register, 2007).

“**Sub-lethal effects** may compromise feeding and associated malnutrition, disease and reduced reproduction, growth and longevity” (Moore et al., 2013)





The Marine
Mammal Center.





The Marine
Mammal Center.





The Marine
Mammal Center.





The Marine
Mammal Center.



www.albatrossthefilm.com



Macro and Micro

An emerging area of study



Plastics Impact:

In the Context of Other Threats to
Marine Wildlife



The Marine
Mammal Center.

Thank You.

The Marine Mammal Center advances global ocean conservation through marine mammal rescue and rehabilitation, scientific research, and education.

