

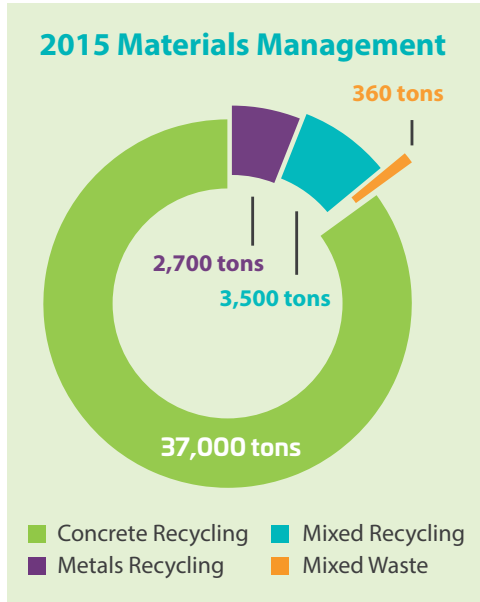
Sustainability Report *Highlights*

"High-speed rail is the most sustainable transportation option for keeping California moving in the 21st Century. It is integral to supporting the State's leading sustainability and climate change policies."

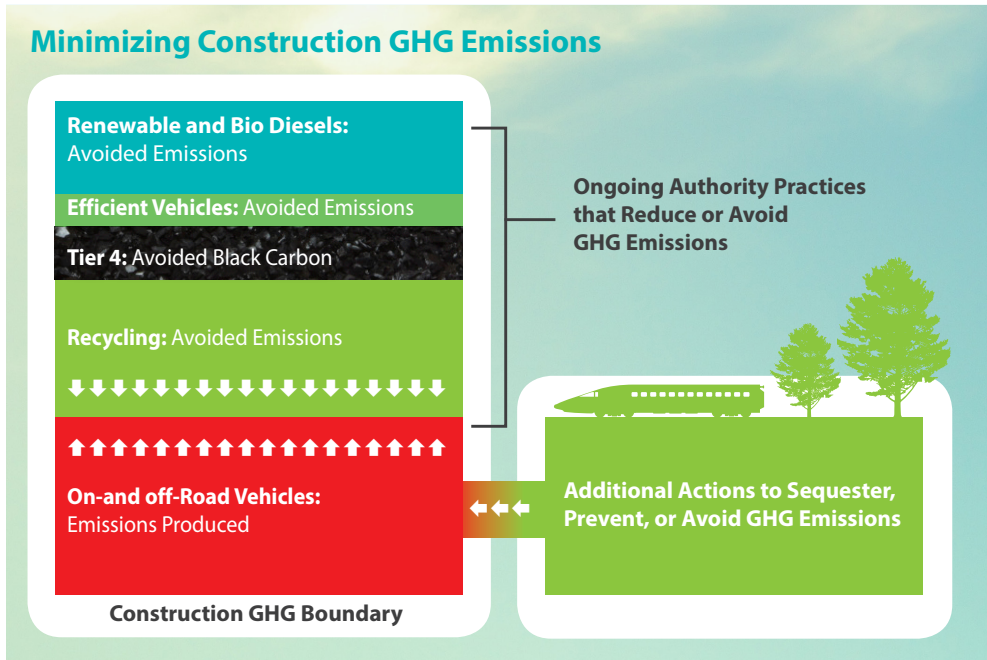
Jeff Morales
Chief Executive Officer

High-Speed Rail Saves 2.1 to 2.8 MTCO₂e by 2030

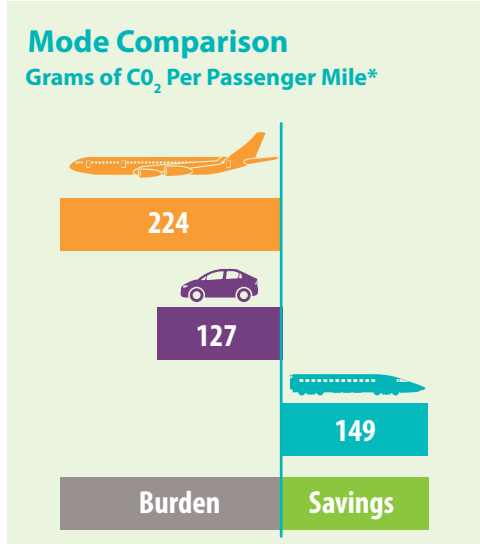
▶▶ \$14 million investment in clean agricultural equipment to offset emissions

▶▶ 68 of the 318 small businesses under contract are located in disadvantaged communities



▶▶ As we procure our high-speed rail trains we require best in class energy efficiency



*Grams per passenger mile were developed based on GHG emissions results developed from the VMT and Air Trip reduction outputs of the ridership and revenue model developed for the 2016 Business Plan. Load factors of 101 passengers per plane, 1.25 passengers per auto, and 265 passengers per train were used.