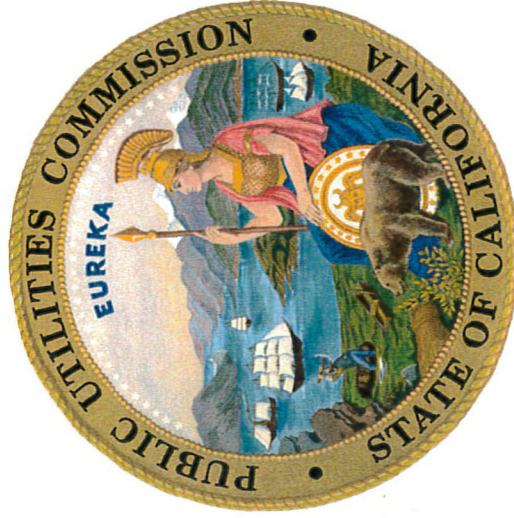
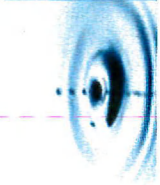
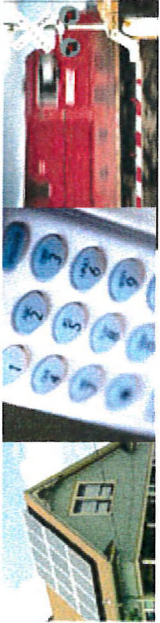




Conference Committee on SB 901 (Dodd) Ensuring a Safe & Reliable Electric Grid



**Elizaveta Malashenko, Director
Safety & Enforcement Division
August 7, 2018**



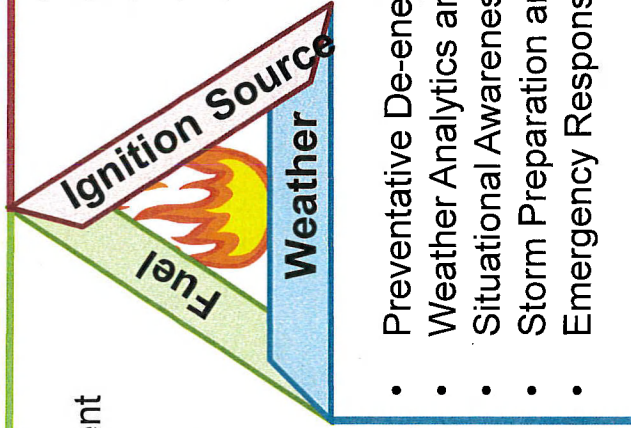
Policy Framework for Utility Wildfire Prevention

Fuel Management

- Clearance Requirements
- Utility Vegetation Management
- Integrated Vegetation Management
- Right Tree Right Place
- Aerial Patrols
- LiDAR Surveying

Ignition Control

- Infrastructure Hardening
- Protective Device Settings
- Fault Detection and Analytics
- Pole Loading
- Maintenance and Inspection Requirements



- Preventative De-energization
- Weather Analytics and Monitoring
- Situational Awareness
- Storm Preparation and Response
- Emergency Response

Weather Preparedness





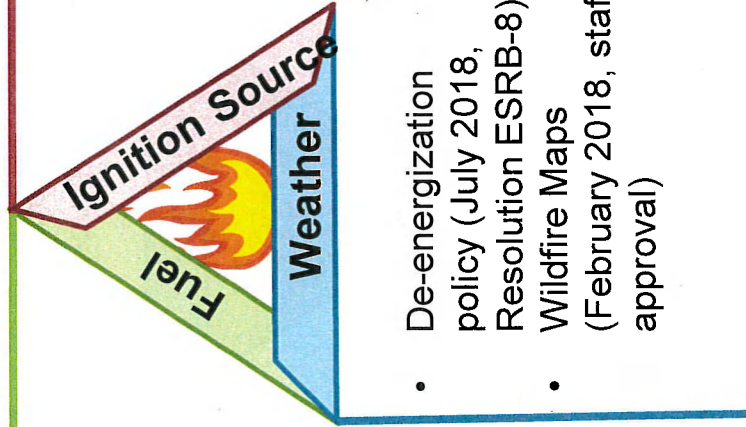
Examples of CPUC Recent Policy Actions

Fuel Management

- Disconnect service to a customer preventing veg. management in the HFTD (December, 2018 D.17-12-024)
- Revised to require utilities to maintain stricter vegetation clearance requirements (December, 2018 D.17-12-024)

Ignition Control

- Stricter utility maintenance program requirements (May 2018, D.18-05-042)
- Increased the effective minimum horizontal clearance between wires in Tier 3 of the HFTD (December, 2018 D.17-12-024)
- Required minimum inspection cycles for overhead communication facilities (December, 2018 D.17-12-024)



Weather Preparedness





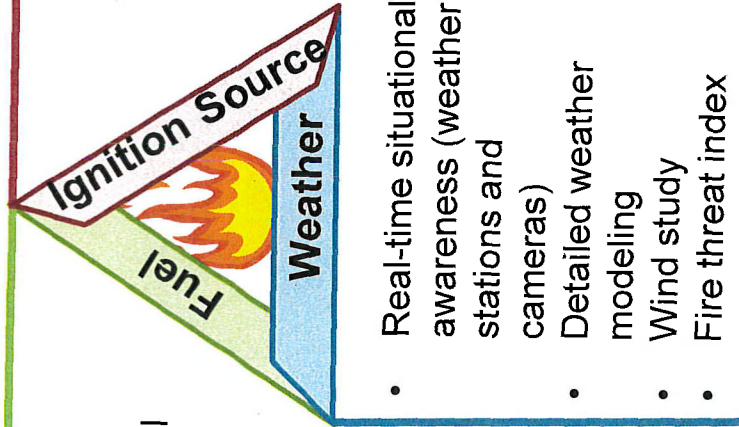
Priority Future Actions

Fuel Management

- LiDAR and other advanced imaging/sensing
- Data analytics and vegetation/fuel risk modeling
- Risk-based vegetation management beyond clearances
- Widespread use of integrated vegetation management (IVM) practices

Ignition Control

- Widespread use of advanced fault line detection and real time power system monitoring
- Overhead conductor failure prevention
- Infrastructure hardening (re-conducting, wire-to-wire clearances etc.)



- Real-time situational awareness (weather stations and cameras)
- Detailed weather modeling
- Wind study
- Fire threat index

Weather Preparedness





Wildfire Mitigation Plans, Risk Assessment, Ratemaking and Enforcement

Wildfire Prevention Planning

Utilities submit fire prevention plans



CPUC and Cal FIRE staff review plans



Utilities adjust plans based on CPUC staff comments

Risk Assessment & Ratemaking

S-MAP process approves methodology used by utilities manage safety risks



RAMP are utility specific filings with risk ranking and mitigation



GRC proceedings consider appropriate funding for risk mitigation based on RAMP

Compliance & Enforcement

G.O. 95 and other Commission decisions

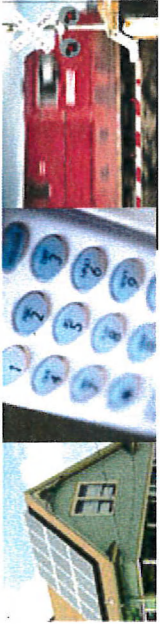


CPUC staff audits and incident investigations



Risk-based enforcement (NOV, citation, OII)



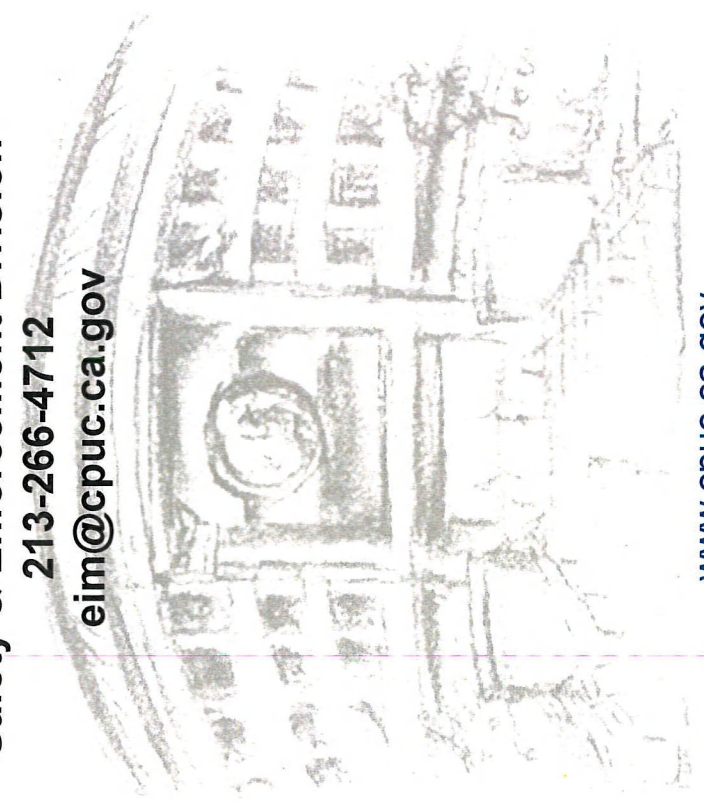


Thank You!

For further information related to CPUC wildfire risk mitigation policies please contact :

**Elizaveta Malashenko, Director
Safety & Enforcement Division**

**213-266-4712
eim@cpuc.ca.gov**



www.cpuc.ca.gov

