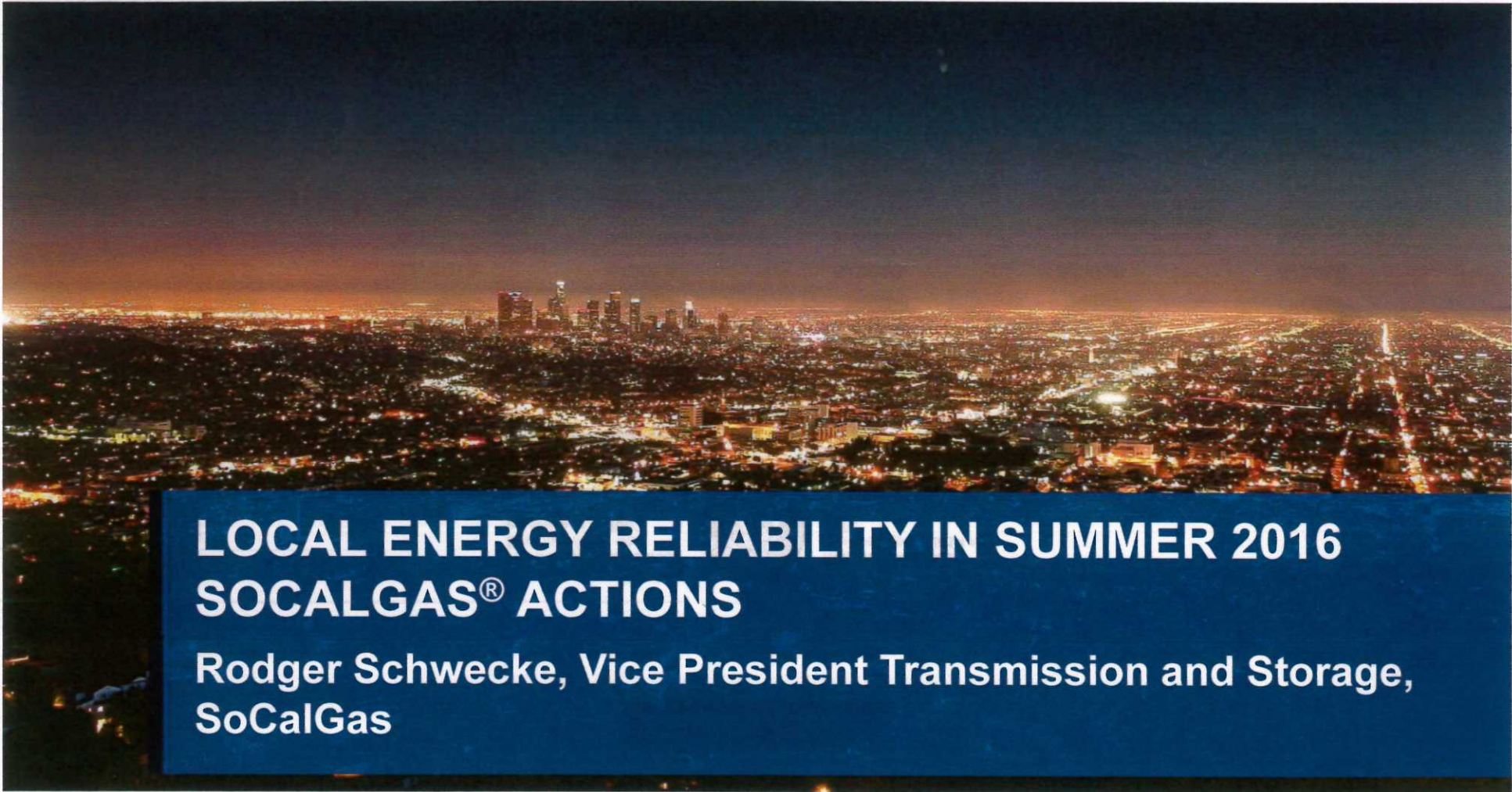




**SoCalGas** A  Sempra Energy utility

May 10, 2016



# LOCAL ENERGY RELIABILITY IN SUMMER 2016 SOCALGAS<sup>®</sup> ACTIONS

Rodger Schwecke, Vice President Transmission and Storage,  
SoCalGas



**SoCalGas** A  Sempra Energy utility

*Glad to be of service.<sup>®</sup>*

# Record of Proactive Steps to Manage Reliability

## EXTERNAL EVENTS

1/2012

San Onofre Nuclear  
Generating System  
(SONGS) offline



The Renewables Portfolio  
Standard (RPS) was  
established in 2002.



RPS The most recent  
achieved goal - 2014 at  
25%.



8/2012

Obtained authorization  
to begin using baseload  
contracts to help system  
operator manage the  
Southern System  
minimum flow  
requirements.



11/2013

Requested and was  
granted authority to  
enter into contracts  
with core to help meet  
the Southern System  
minimum flow  
requirement.



6/2014

Requested and granted  
authority to adopt low  
Operational Flow Order  
(OFO) and Emergency  
Flow Order (EFO) to  
balance supply and  
demand.



6/2015

SoCalGas seeks an  
update to 20 year old  
curtailment rules  
recognizing gas/ electric  
interdependencies.



3/2016

SoCalGas recommends  
spearheading a conser-  
vation campaign during  
Aliso moratorium.



4/2016

SoCalGas, SDGE,  
CAISO, ORA, and 22  
customers and customer  
groups proposed a  
package of reliability/  
enhancement  
measures to the CPUC.

Ongoing

Physical reliability  
projects.

## SOCALGAS ACTIONS

N16/0094A 050716v2



# Actions Underway to Safely Restore Aliso

## WELL INSPECTION PROCESS

### PRIORITIZE

#### PRIORITIZE:

- Configured for injection and withdrawal through tubing only
- Locations with highest capacity
- Condition of surface hardware

### ASSESS

#### ASSESS:

- Temperature & Noise Tests
- Additional DOGGR required tests:
  - Casing Wall Inspection
  - Cement Bond Log
  - Multi-Arm Caliper Inspection
  - Pressure Test

### RETURN TO SERVICE

#### RETURN TO SERVICE:

- Diagnostics complete; well certified by DOGGR to return to service
- Diagnostics complete; well to be temporarily plugged
- Aliso Canyon field receives overall certification from DOGGR to return to service

## Winter Reliability

- The primary focus so far has been on summer electric reliability
- But winter natural gas reliability is also extremely important
- The potential customer impacts of natural gas curtailment during winter could be significant
- In particular, should curtailments impact core customers, restoration of service could be a significant issue

# Summary

- We strive to provide safe and reliable service at reasonable rates to all customers including large commercial and industrial customers such as electric generators and refineries
- Our primary obligation, as directed by the CPUC, is to core customers
- We prioritize to meet core demand with special consideration towards reliability during winter months
  - Core customers include residential customers, small businesses and providers of fuel for natural gas vehicles