

ILWU Local 29 & Port of San Diego

A partnership and a tradition.





Working Together

For Our Local, State, and National Economy.



For Over 50 Years

Communication and collaboration has steadily increased. Lines of communication are wide open. We are quick to address issues, often before they arise.

Growth next to LA/LB

We have been able to coordinate our efforts to attract customers with more specific needs. Our cooperative framework has also encouraged many to stay over the years. Most recently, Disney Cruise Lines.

San Diego Longshore

A brief overview

Versatile

Skilled

Solidarity

Versatile

Committed

Awarded

Versatile

Safety Driven

Proud

Support and Security

Versatile

There are a wide variety of jobs available each day.

You can potentially have a different type of job each day of the week. Sometimes you end up somewhere you didn't expect.



2011/09/07 02:01

Solidarity

We work, sweat, and bleed together. We take care of each others' lives every day on every shift.

“AN INJURY TO ONE IS AN INJURY TO ALL”



Committed

A large number of longshore workers stay on the job well into their 70s and some have stayed into their 80s!

Also, there are quite a few who work more than a 40 hour work week.



Versatile

Not only do we do different types of work each day, but we also work with different people everyday. Top to bottom. It's important to be on the same page and understand each other.



2011/11/17 15:42



Proud

Taking the oath of longshore membership is one of the proudest moments of our lives. That pride is apparent throughout our careers and long into retirement.



2011/09/13 18:09

Skilled

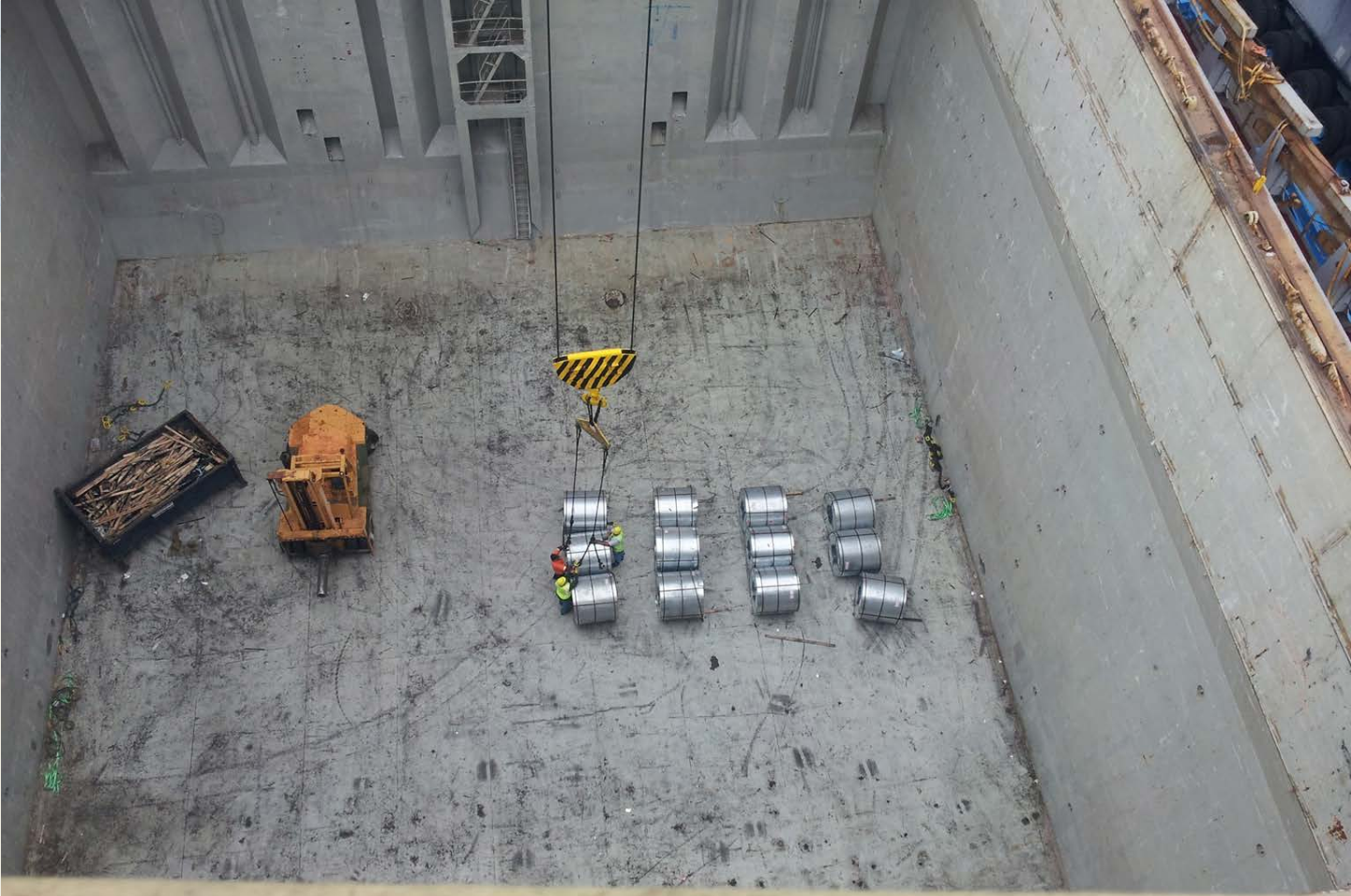
We have detailed training on all equipment we operate and our seniority system promotes steady gains of experience throughout our ranks.

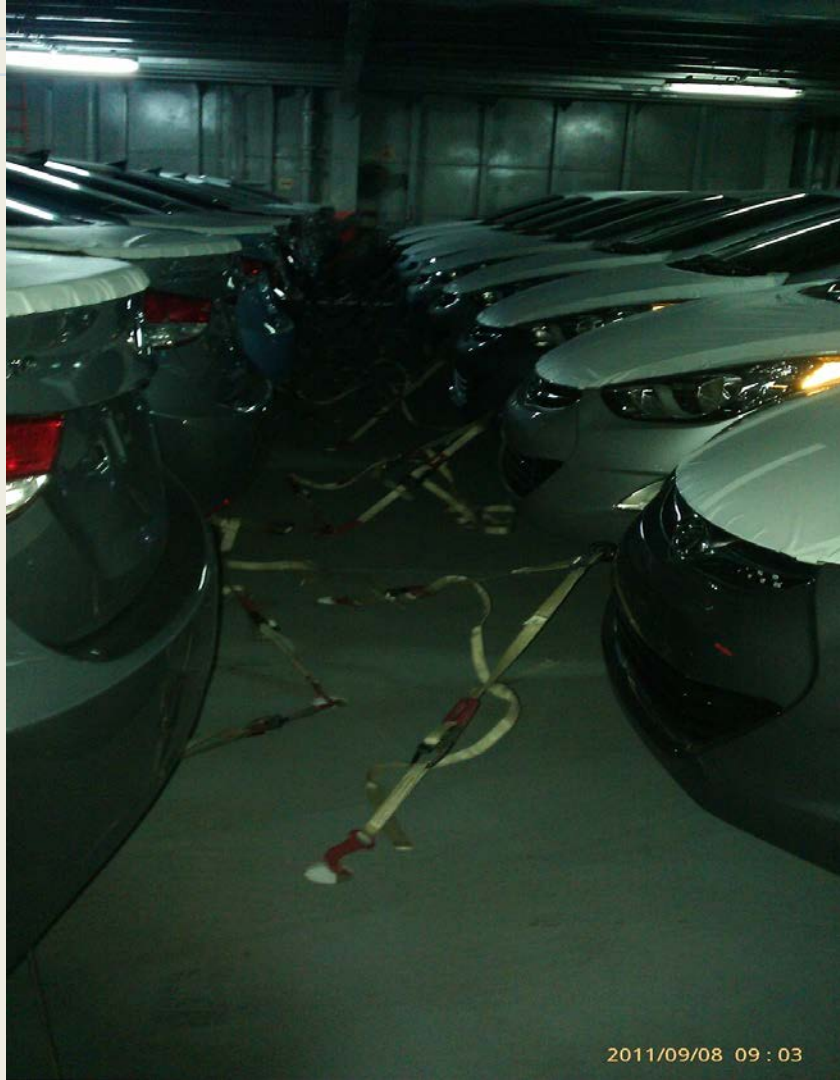


Versatile

And, not only do we work different types of jobs with different people each day, but we work with almost endless variations of cargo and gear.







2011/09/08 09:03



2011/11/17 11:01

Awarded

We have received several awards over the years for overall tonnage and production rates.

*The Port of San Diego
Salutes the*

INTERNATIONAL LONGSHOREMEN'S
& WAREHOUSEMEN'S UNION
LOCAL No. 29

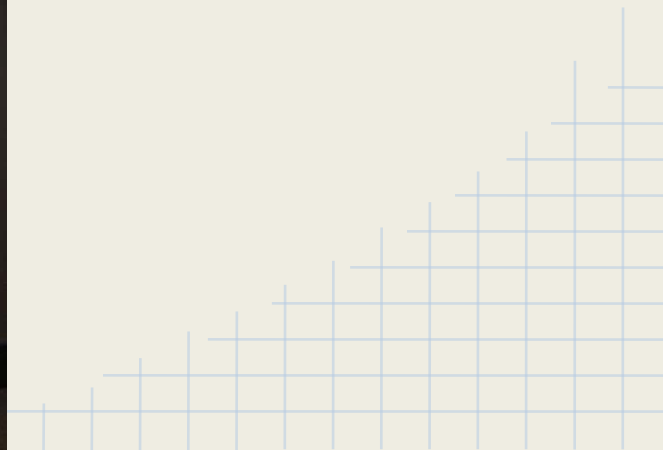
*For the record loading of 15,329 metric tons
in the initial two shifts
aboard the M/V Ansac Sincerity*



April 15, 1996

Safety Driven

We have also received awards for our safety on the job.



Support and Security

We are all very thankful for the ILWU. The union gives us security. It's something we believe everyone should have.

We are proud to support our community who in turn

supports us!





