



# California Statewide Local Streets & Roads Needs Assessment

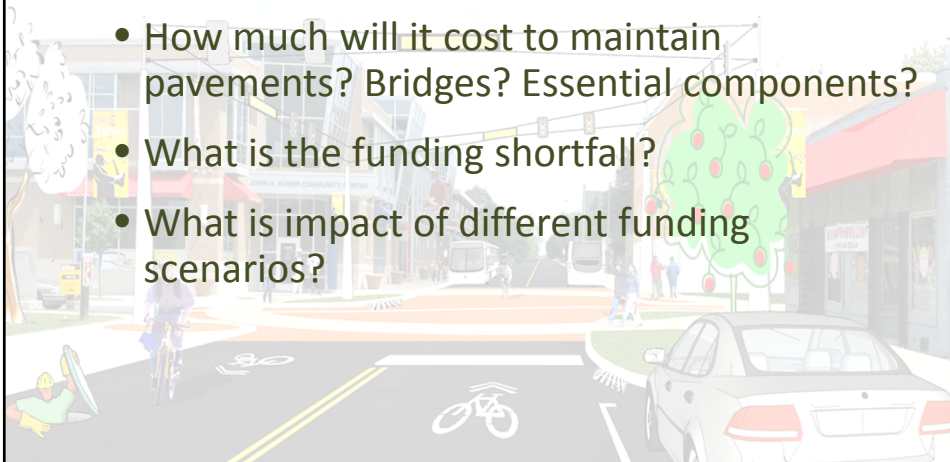
---

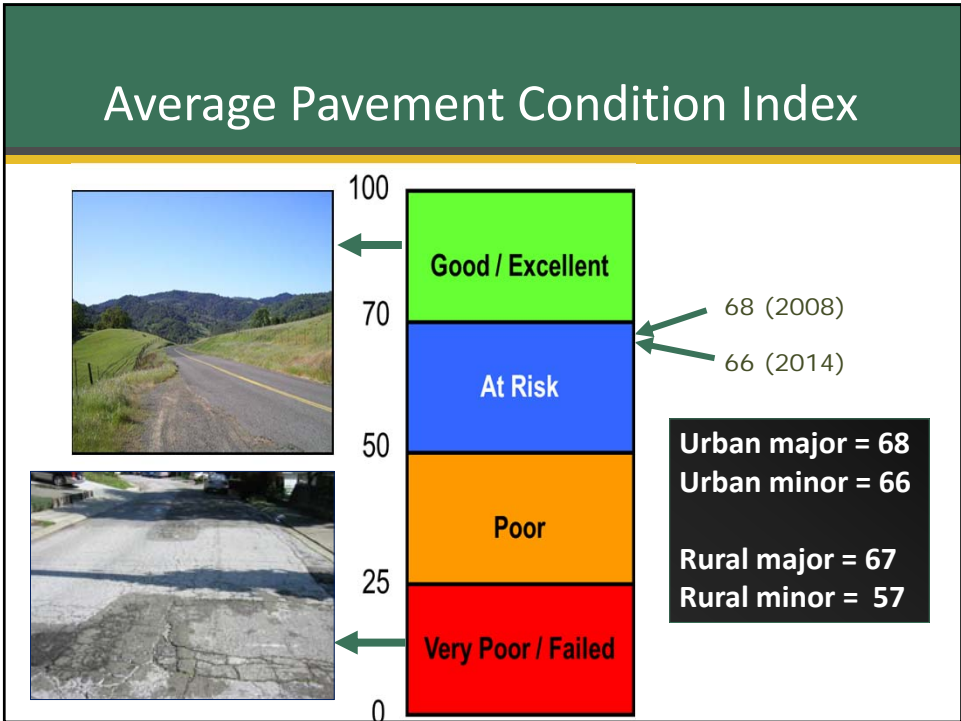
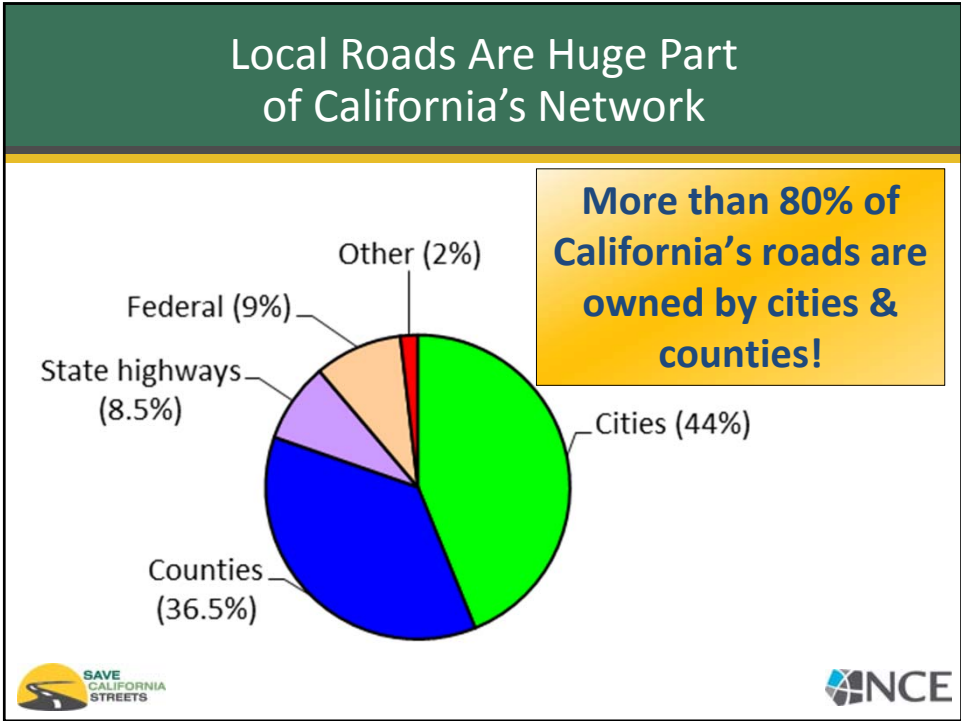
## 2014 Update

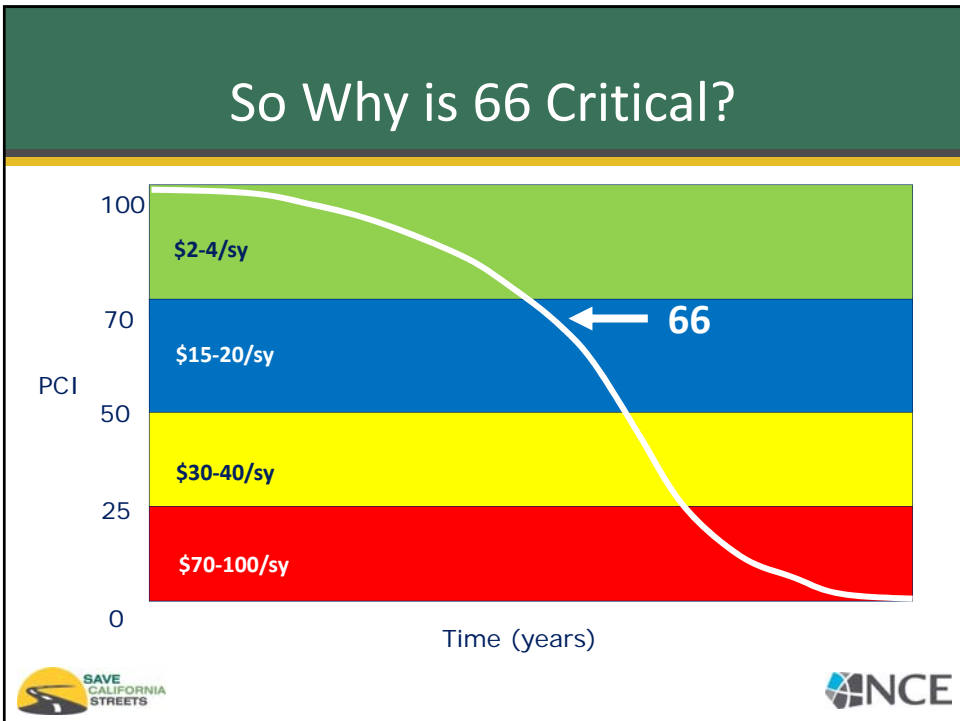


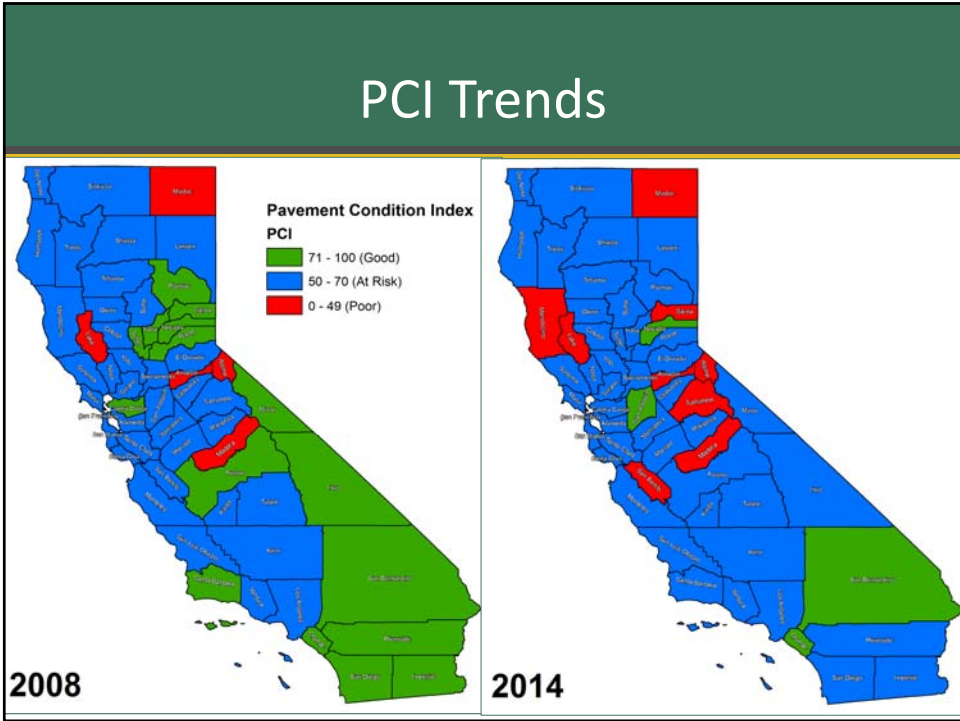
## Background

- What are pavement conditions statewide?
- How much will it cost to maintain pavements? Bridges? Essential components?
- What is the funding shortfall?
- What is impact of different funding scenarios?











## Sustainable Pavement Strategies

Sustainable Pavement Strategies	No. of Agencies			Average % Savings
	No. of Responses	Savings	Add'l Costs	
Reclaimed AC Pavement (RAP)	129	46	7	11%
Cold in place recycling	69	30	7	30%
Full depth reclamation	102	22	10	32%
Pavt Preservation	223	52	28	35%
Warm mix AC	63	7	8	-
Rubberized AC	187	15	67	-
Porous/Pervious pavements	27	2	6	-

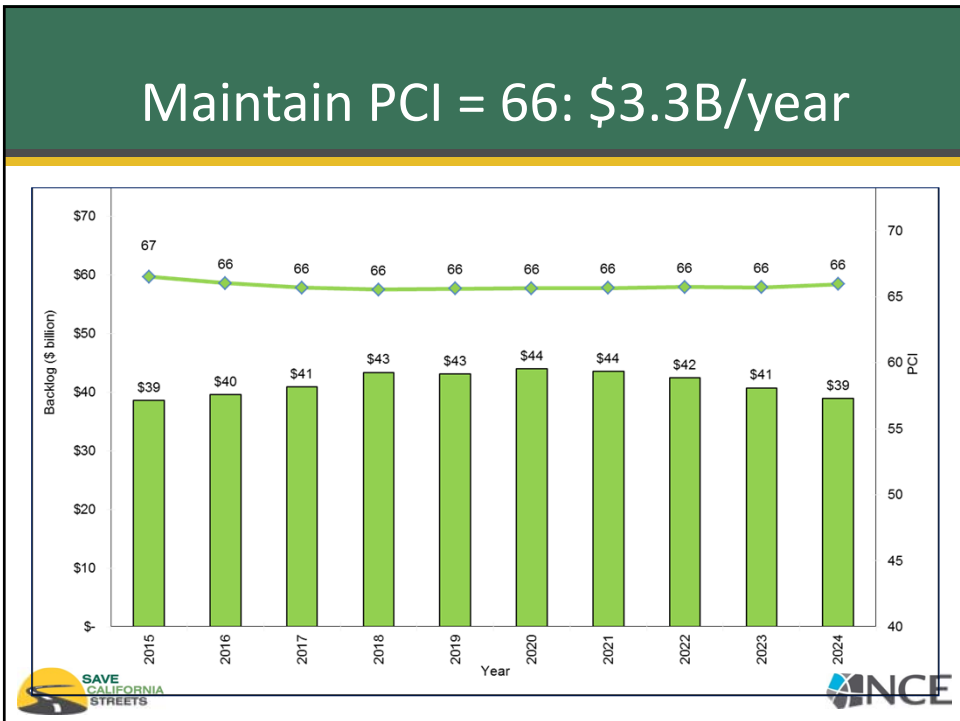
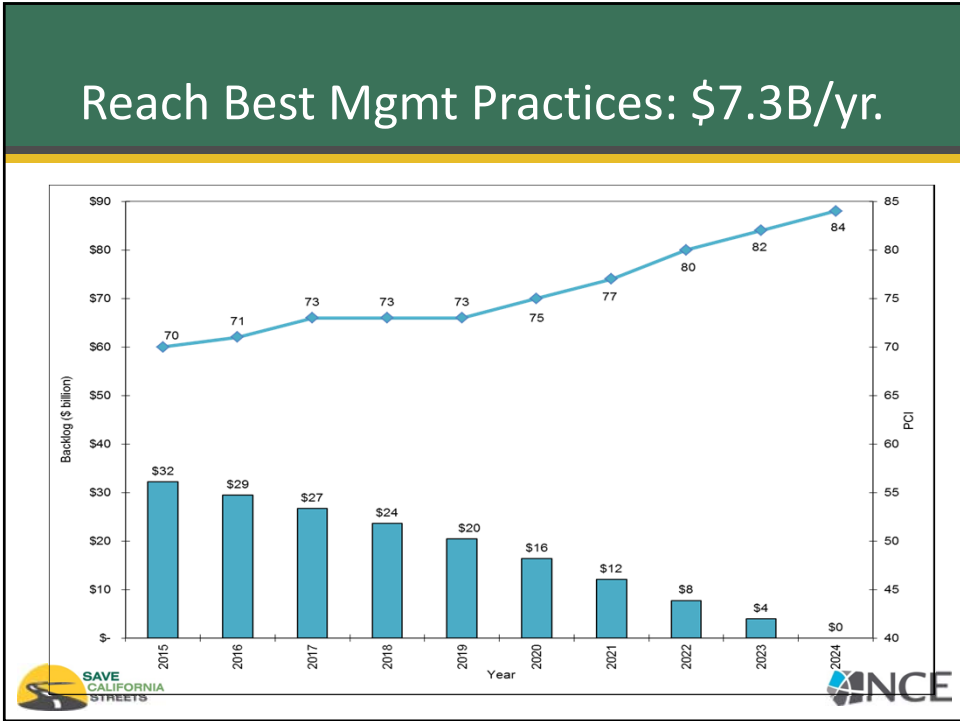
## Complete Streets Policies

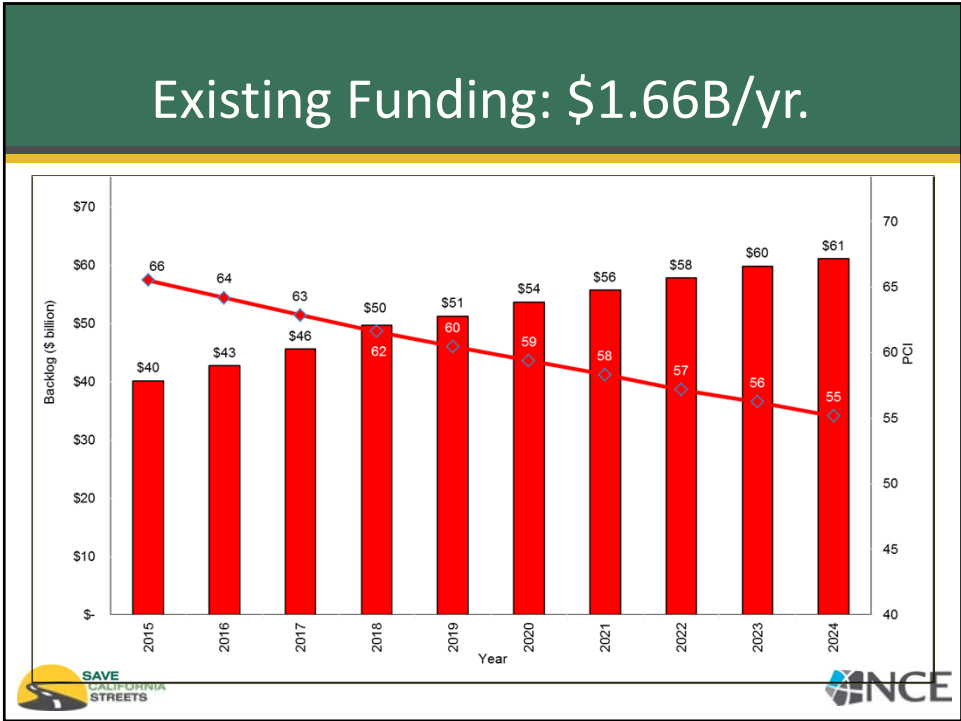
- Primarily bike and pedestrian facilities
- 28% of total agencies have a complete streets policy (triple the number from 2012)
- 21% have elements of policy in place
- Large range in costs - \$15/sy to \$700/sy



## Funding Strategies for Pavements

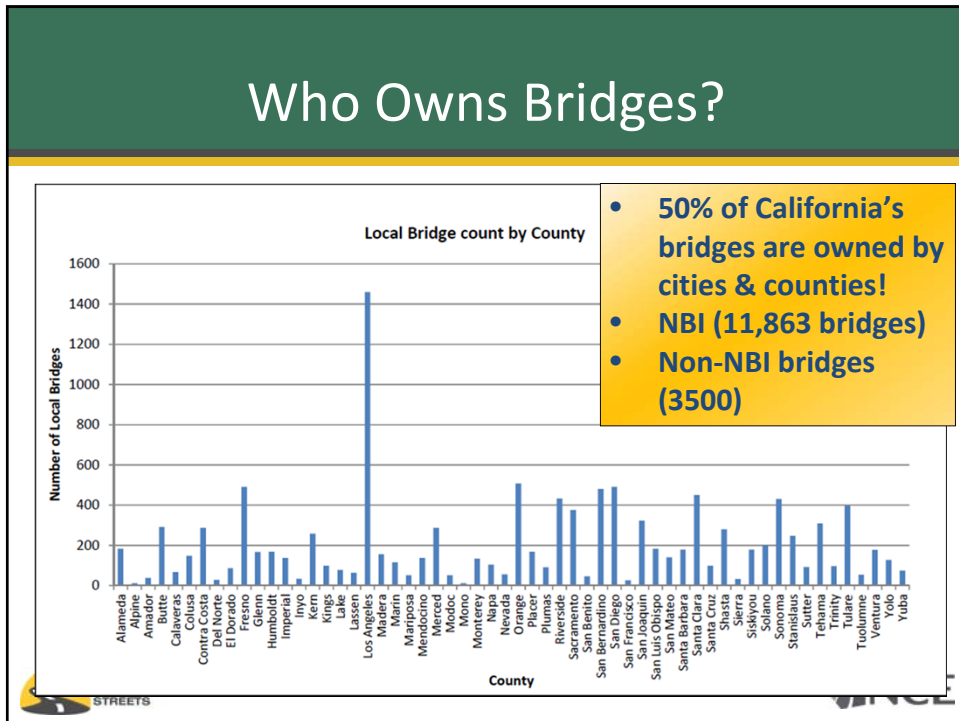
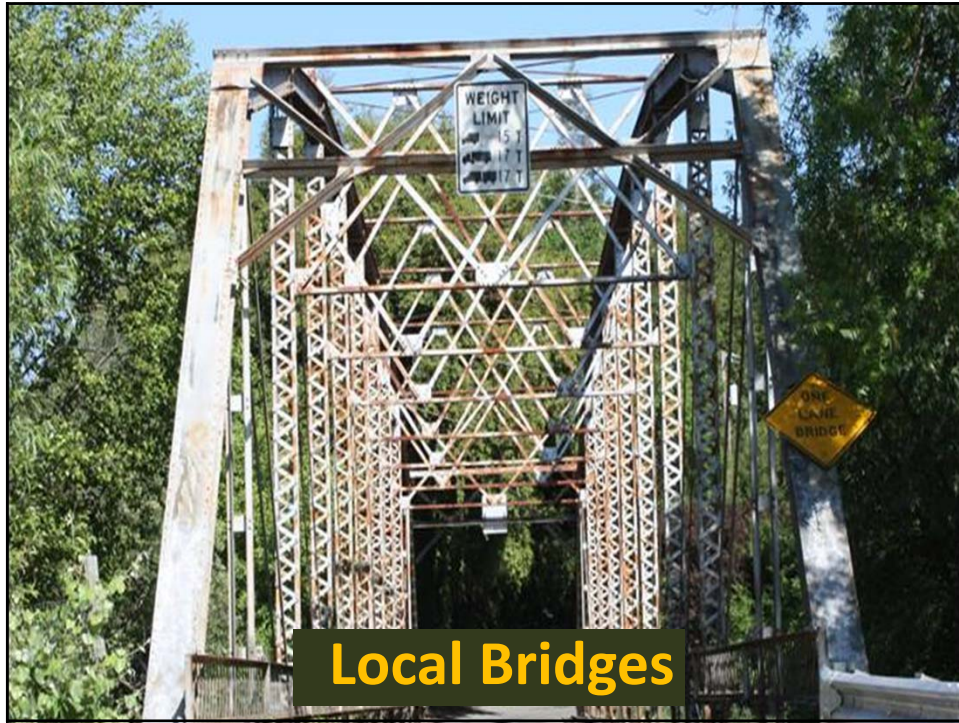






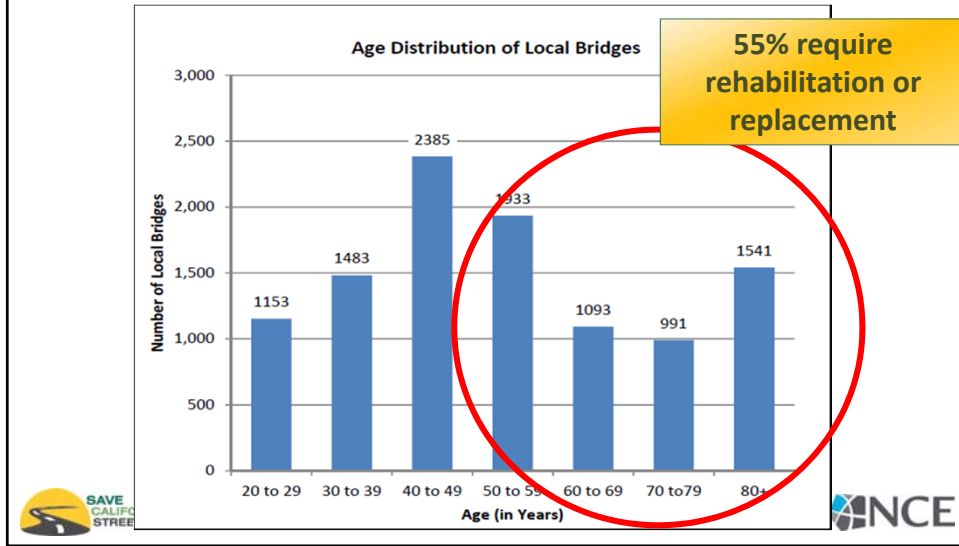
### What Is a Failed Road?

**The percent of roads in failed condition will increase from 6.2% to almost 25% by 2024 under current funding**

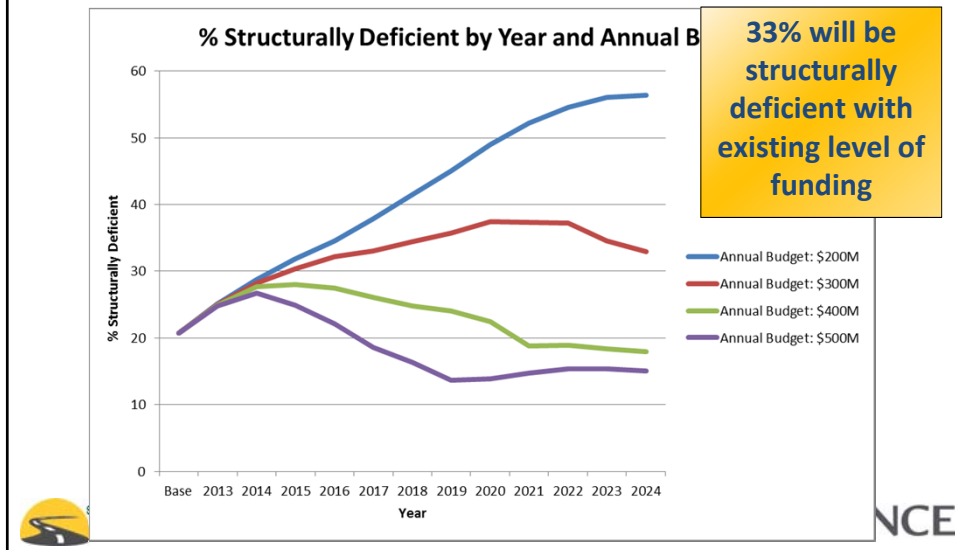




## Bridges Are Getting Old



## Structurally Deficient Bridges



## Essential Components



- Sidewalks
- Curb ramps
- Curb & gutter
- Storm drains
- Street lights
- Signs
- Retaining walls

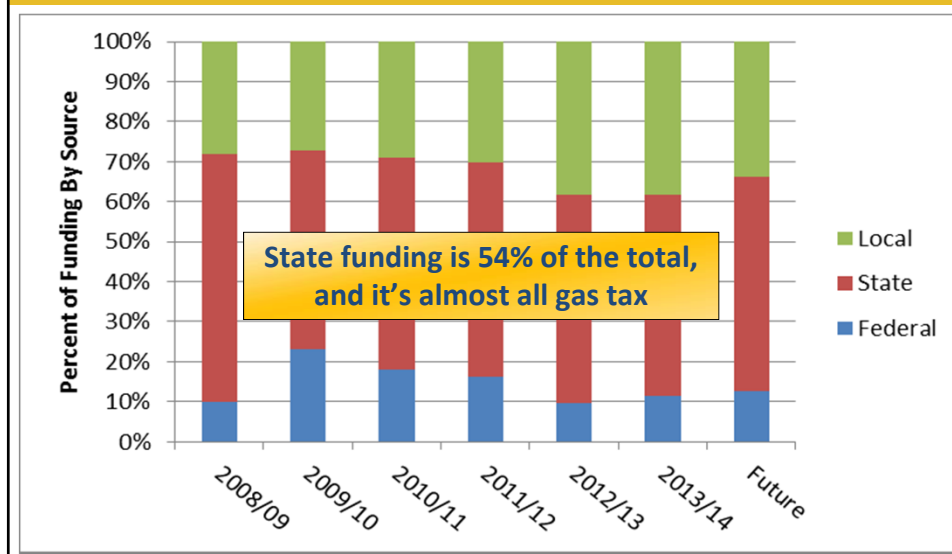


## What Are Funding Shortfalls?

Transportation Asset	10 Year Needs (2014 \$B)	Funding	Shortfall
Pavements	\$72.7	\$16.6	\$ (56.1)
Essential Components	\$31.0	\$10.1	\$ (20.9)
Bridges	\$4.3	\$3.0	\$ (1.3)
<b>Totals</b>	<b>\$108.0</b>	<b>\$29.7</b>	<b>\$ (78.3)</b>



## Funding Trends



## Findings

- Local road network is deteriorating, and by 2024:
  - Average PCI will deteriorate from 66 to 55
  - Unfunded backlog will grow to from \$40 to \$61 billion
  - Almost 25% of roads will be in failed condition
  - Similar conclusions for bridges, safety and other essential transportation components
- An additional \$7.8 billion/year is needed

## Conclusions

- Californians and our economy relies on the local transportation system
- New sustainable sources of revenues must be created that are focused on preservation of existing local road network
- Californians need to work together to find ways to fund local streets & roads



Questions?

Jennifer Whiting  
[jwhiting@cacities.org](mailto:jwhiting@cacities.org)

Kiana Buss  
[kbuss@counties.org](mailto:kbuss@counties.org)

