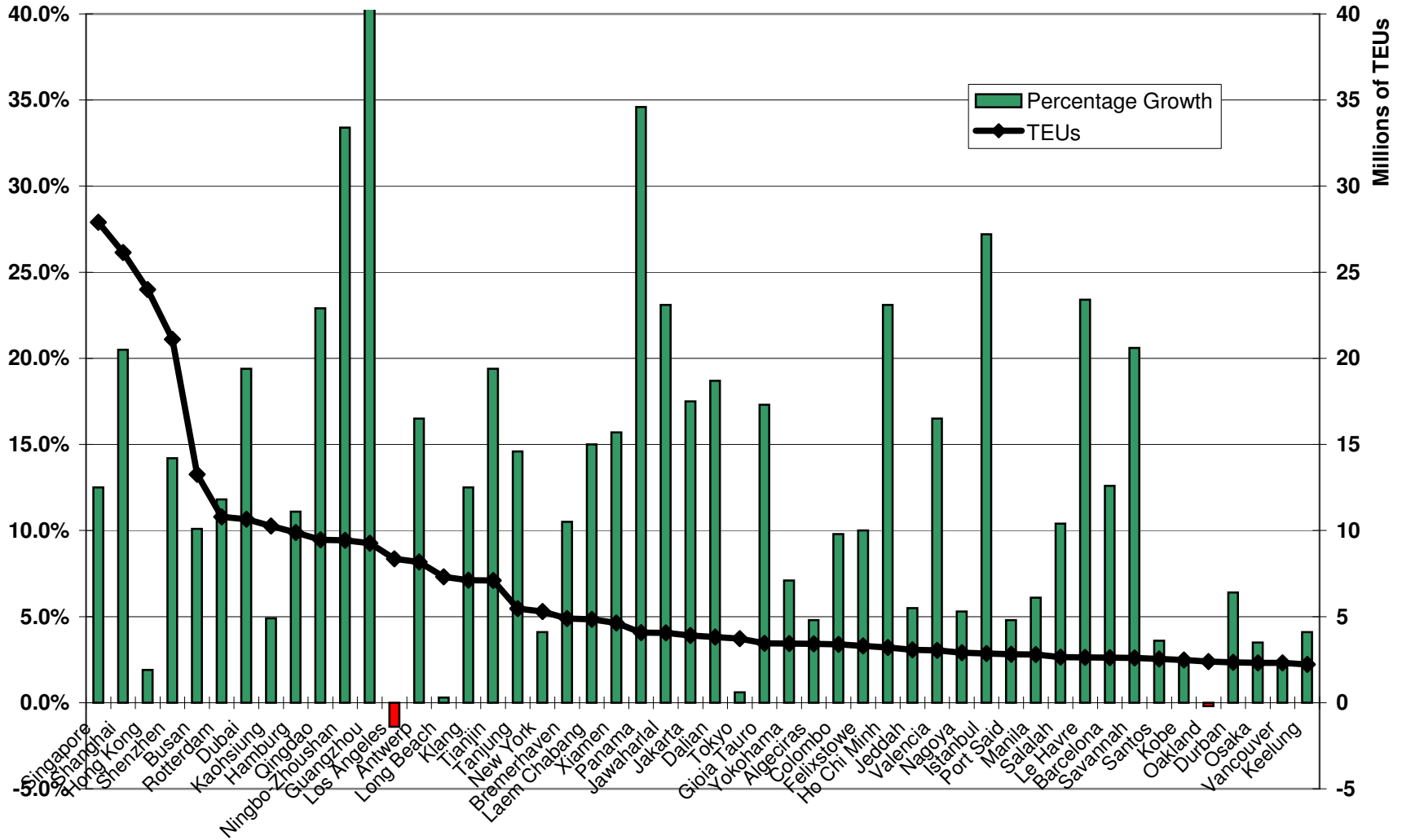


Chart1

2007 Growth for the World's 50 Largest Ports by TEU Volume

Source: "CS Top 100 Container Ports 2008"

(<http://www.cargosystems.net/freightpubs/cs/top100.htm;jsessionid=B1FB2518FD67C0DF6A30B33930BF0E52>)



Out of the Top 50 World Ports, Only the Ports of Los Angeles and Oakland had Negative Growth Before the Recession Hit