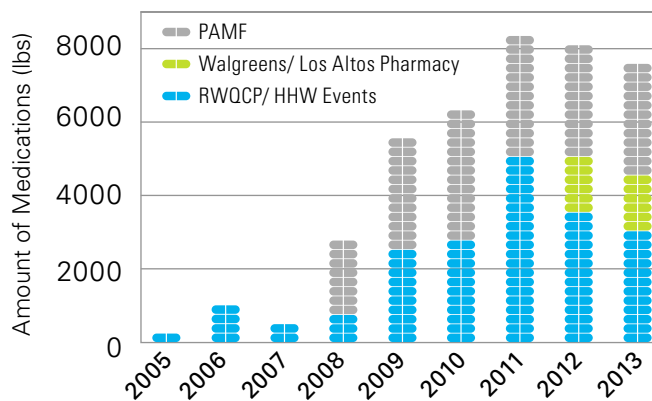


HISTORY OF PHARMACEUTICAL COLLECTION

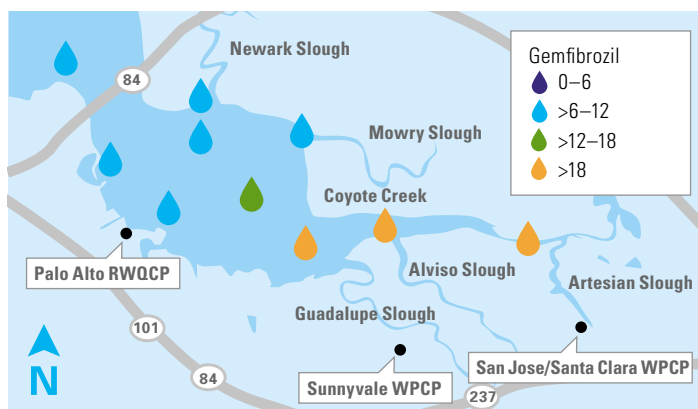
▶ THE PROBLEM:

Lack of convenient, cost-effective disposal options for unwanted pharmaceuticals results in improper disposal in sinks, toilets and the trash. Since wastewater treatment plants cannot completely remove these chemicals, pharmaceuticals have been detected in wastewater treatment plant effluent, waterways and even drinking water supplies.



8,000 POUNDS

— amount of pharmaceuticals collected in the Regional Water Quality Control Plant (RWQCP) service area in 2013 at two medical centers, two pharmacies and the RWQCP which includes senior centers and take-back events. This is just a fraction of the estimated 2.2 pounds of pharmaceutical waste per household available in the RWQCP's 220,000 population service area.



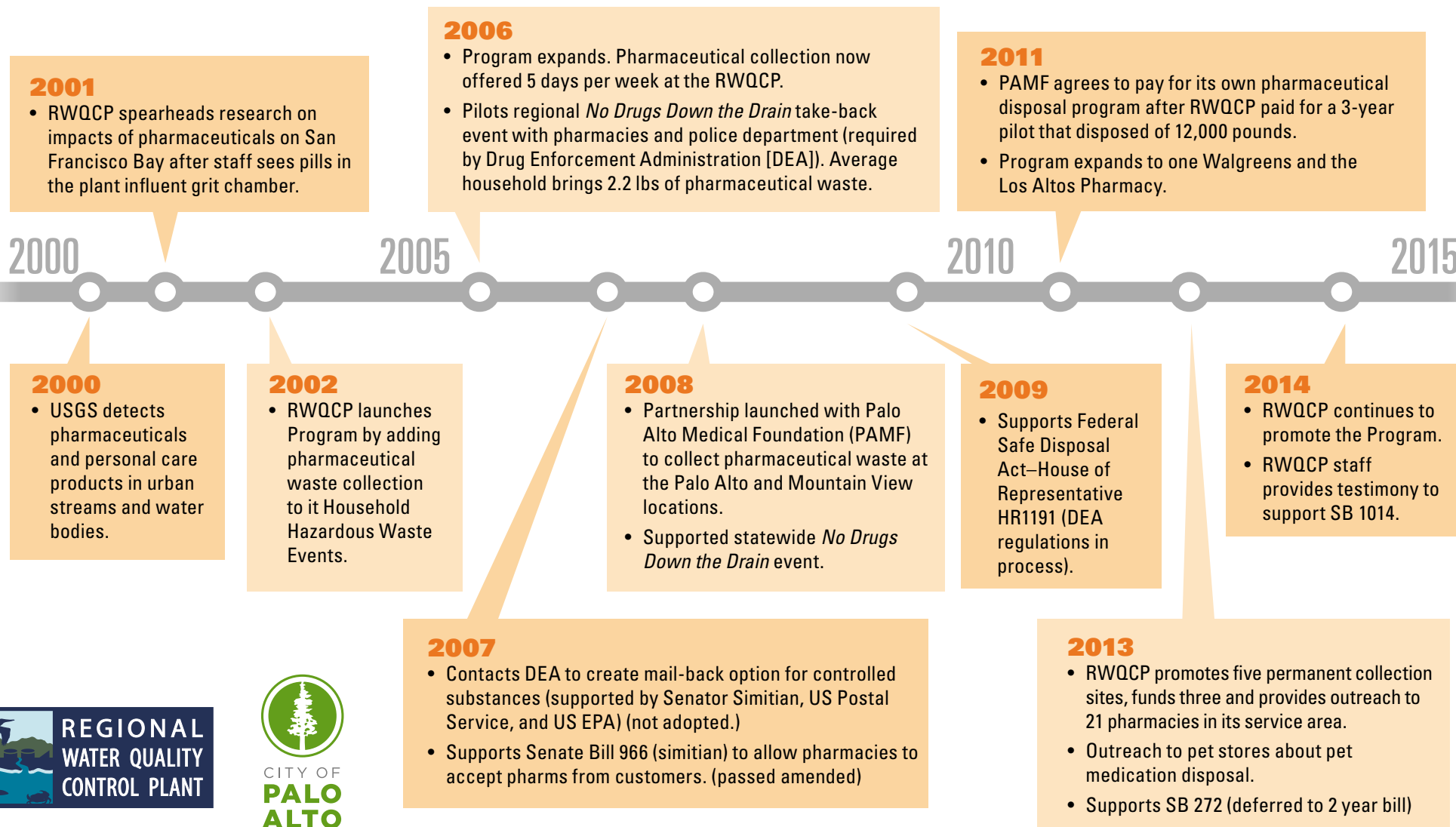
PHARMACEUTICALS

detected in wastewater and in the Lower South Bay. (Gemfibrozil is a cholesterol medication) San Francisco Estuary Institute, 2009.

▶ THE SOLUTION:

Establish industry funded safe and convenient disposal locations at point-of-sale.

RWQCP Pharmaceutical Collection Program Timeline





Pharmaceutical disposal outreach is provided free of charge to all pharmacies in the RWQCP service area.



The RWQCP maintains an onsite collection bin for pharmaceuticals and sharps.



Residents are asked to consolidate medications before disposal.



Not sure what to do with unwanted Pet Medications?

Dispose of them properly to protect your pets, family and San Francisco Bay.



What you should know as a pet owner...

- 1

DON'T FLUSH unwanted pet medications of any kind down the toilet or sink. Some medications can't be removed during wastewater treatment and can enter San Francisco Bay causing potential harm to water quality and wildlife.
- 2

TO PROTECT your family, pets and San Francisco Bay, dispose pet medicines properly at a local collection site (see reverse).
- 3

FOR MORE INFORMATION about the expiration, use or storage of pet medications ask your veterinarian or pharmacist.



Pharmaceutical disposal outreach is provided to pet owners provided at veterinarian offices and pet stores.