

# California's Current LTSS System

Senate Select Committee on Aging and Long-Term Care



Commissioners at USC Davis School of Gerontology

# Periodic Table of California's Long-Term Care Programs and Services for Older Adults and Adults with Disabilities

**Program or Service Name/Acronym/Abbr.**  
 Primary Funding Source (if known)

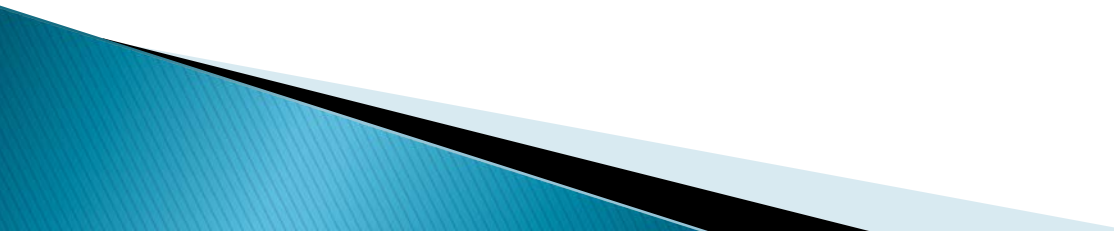
- Department of Public Health
- Department of Health Care Services
- Department of Veterans Affairs
- Department of Developmental Services
- Department of Consumer Affairs
- Department of Rehabilitation
- Department of Food and Agriculture
- Department of Education
- Employment Development Department
- Department of Motor Vehicles
- Health and Human Services Agency
- Department of Aging
- Centers for Medicare & Medicaid Services
- Department of Child Support Services
- Department of Social Services
- Dept. of Community Services & Development
- Department of Justice/Office of Atty. General
- Department of Human Resources
- Housing and Finance Agency
- Department of Transportation/Caltrans

																OAC	
AD program												Cal-Fresh USDA	CSS	Medicare	ADRDAC CMS		
CAPP	CBAS CMS											KSSP	AAAs	Alz. CMC CMS	CBAS CMS		
PHCA**	CRCs	IMPACT DHCS											IHSS CMS	ADRCs	CDSME ACL	MSSP CMS	
WISE-WOMAN CDC	AIDS waiver CMS	IHO waiver CMS											LIHEAP ACF	SSDI SSA	ADCRCs*	Nutr. ACL	DPHP ACL
C4P CDC	HCBS-DD waiver CMS	DD-CNC waiver CMS	State Plan Services CMS	Veteran Homes	RCs	SCCRC	ILCs	SFMNP USDA	CACFP USDA	SD	LTD	WAP DOE	SSI/SSP SSA	BBP*	SCSEP ACL	FCSP ACL	
AIDS waiver CMS	ALW CMS	NF-AH waiver CMS	MMC CMS	Home Loans	HCBS-DD waiver CMS	CPIS	MEP	Spec Services	PFL	SOP	DCRA	PC&S	CAPI GF	FGP*	SNAP-Ed	HICAP Fed. grant	
HHA Cert.	CCT CMS	IHSS+ CMS	CCI CMS	Pension	DCs	SSS	TTW	SAP	CalJOBS	Senior Savers	HCVP/AHP HUD	BMFEA	CVCB	Linkages*	Support Services	Legal Asst. ACL	
NH-L&C	CPLTC	PACE CMS	PDDP	Claims	OPS	CSLB-Contractor Info	TBI	BEP	EU	EDSTP FTA	PRA HUD	ECE	CCLR/P/CCRC	RPOS*	MIPPA ACL/CMS	LTCOP ACL	
CBAS L&C	CLSB waiver CMS	SCAN CMS	GHPP	A&A	FGSCP	CFB	AT	LEAP	AJCC	NFT** FTA	MHSA HP MHSA	EOLCP	APS	SCP*	NFT* FTA	EAPP ACL	

\*These programs no longer receive any General Fund support, but remain authorized in statute as part of the Older Californians Act. The local Area Agencies on Aging determine whether and to what extent to fund the programs.

\*\*These programs no longer receive any General Fund support.

# LTSS DEVELOPMENT

- ▶ 1970      Service Innovation & Initiation
  - ▶ 1980      Home & Community Based Services
  - ▶ 1990      Strategic Planning
  - ▶ 2000      Economic Downturn
  - ▶ 2010      Changing Service Design
- 



Building an Aging Agency for the 21st Century  
California is a pioneer

Strategic Plan for an Aging California Population

The Challenge is CLEAR  
THE TIDES ARE DOWN!  
A Call for Development and Investment in California's Long-Term Care System

Real Lives, Real Solutions  
Improving Long-Term Care Services

Improving California's Response to Elder Abuse, Neglect, and Exploitation  
A BLUEPRINT

Fast Lines in the Shifting Landscape  
SILC  
STATE INDEPENDENT LIVING COUNCIL  
NEEDS ASSESSMENT FOR PEOPLE LIVING WITH DISABILITIES

UPRE REPORTS  
Strategic Planning Framework for an Aging Population



CSA

October 2009

### California Budget Cuts Fray the Long-Term Care Safety Net

Steven P. Wallace, A.E. (Ted) Benjamin, Valentine M. Villa and Nadereh Pourat

UCLA CENTER FOR HEALTH POLICY RESEARCH

HEALTH POLICY RESEARCH

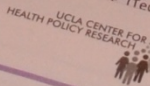


POLICY NOTE

February 2010

### Budget Proposals Turn Back Clock 30 Years in Long-Term Care Services for California Seniors

Steven P. Wallace, D. Imelda Padilla-Frausto, Carolyn Mendez-Luck, A. E. (Ted) Benjamin, Eva Durazo, Nadereh Pourat

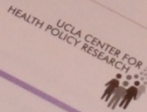


### Health Policy Brief

September 2011

### Stressed and Strapped: Caregivers in California

Geoffrey J. Hoffman and Carolyn A. Mendez-Luck



### Health Policy Brief

December 2011

### Independence at Risk: Older Californians with Disabilities Struggle to Remain at Home as Public Supports Shrink

Kathryn G. Kietzman, Eva M. Durazo, Jacqueline M. Torres, Anne Soon Choi, Steven P. Wallace

**SUMMARY:** This policy brief presents findings from a yearlong study that closely followed a small but typical set of older Californians with disabilities who depend on fragile arrangements of paid public programs and unpaid help to live safely and independently at home. Many of these older adults have physical and mental health needs that can rise or fall with little warning; most are struggling with increasing disability as they age. In spite of these challenges, most display resilience and fortitude

and all share a common determination to maintain their independence at almost any cost. Declines in health status and other circumstances among aging Californians have been exacerbated by recent economic support, and will be a significant challenge for public policy makers.

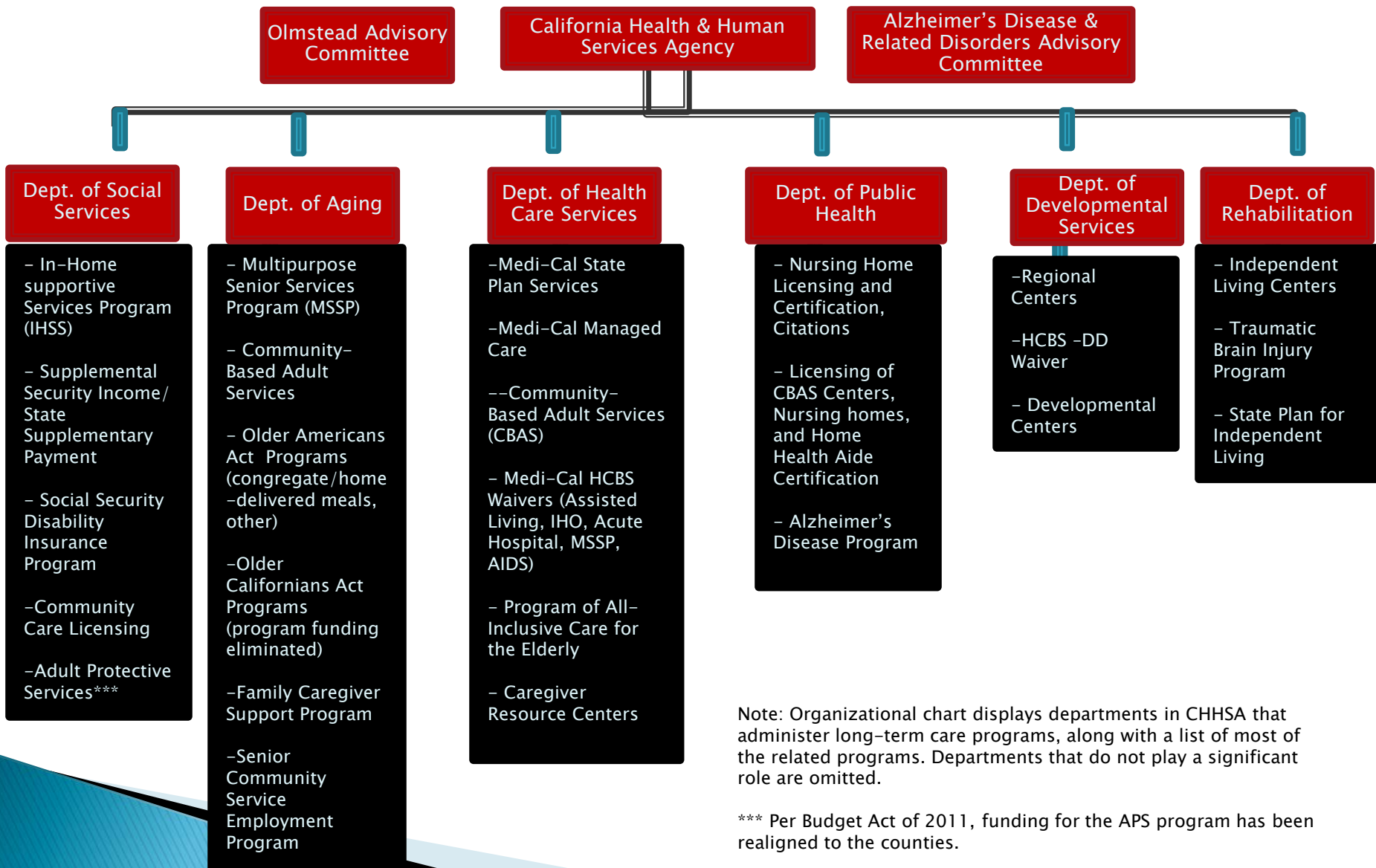


This policy brief is available in call format. The SC F... www.thr...

*California's LTSS network is fragmented and often uncoordinated*

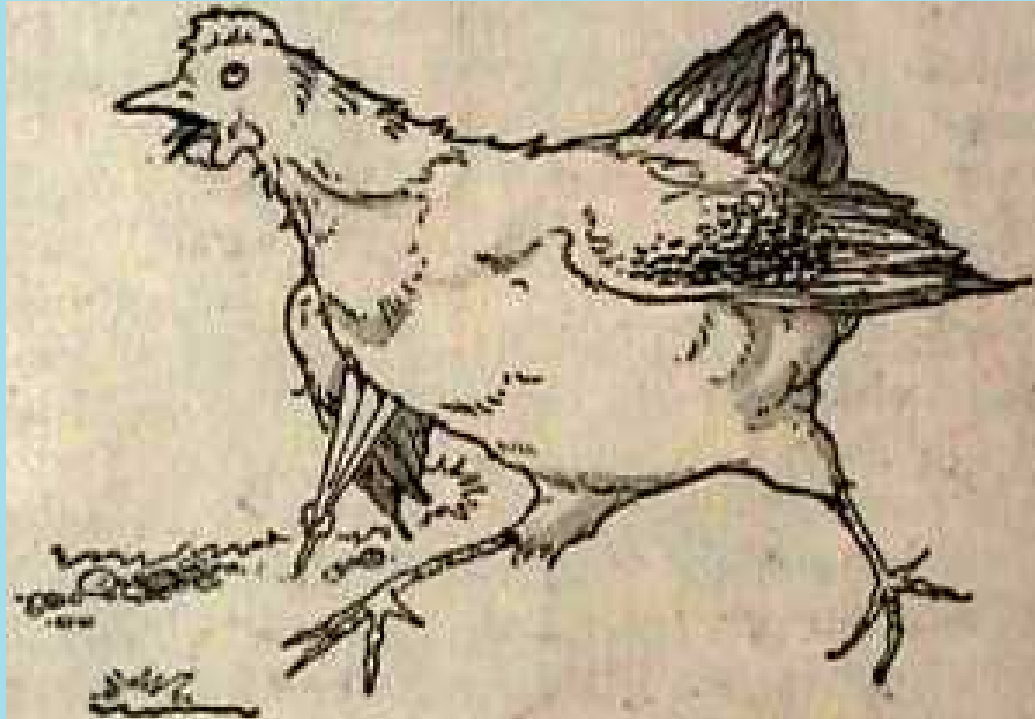
**A**ging safely at home...

# California's Departments and Programs for Long-Term Care



Note: Organizational chart displays departments in CHHSA that administer long-term care programs, along with a list of most of the related programs. Departments that do not play a significant role are omitted.

\*\*\* Per Budget Act of 2011, funding for the APS program has been realigned to the counties.

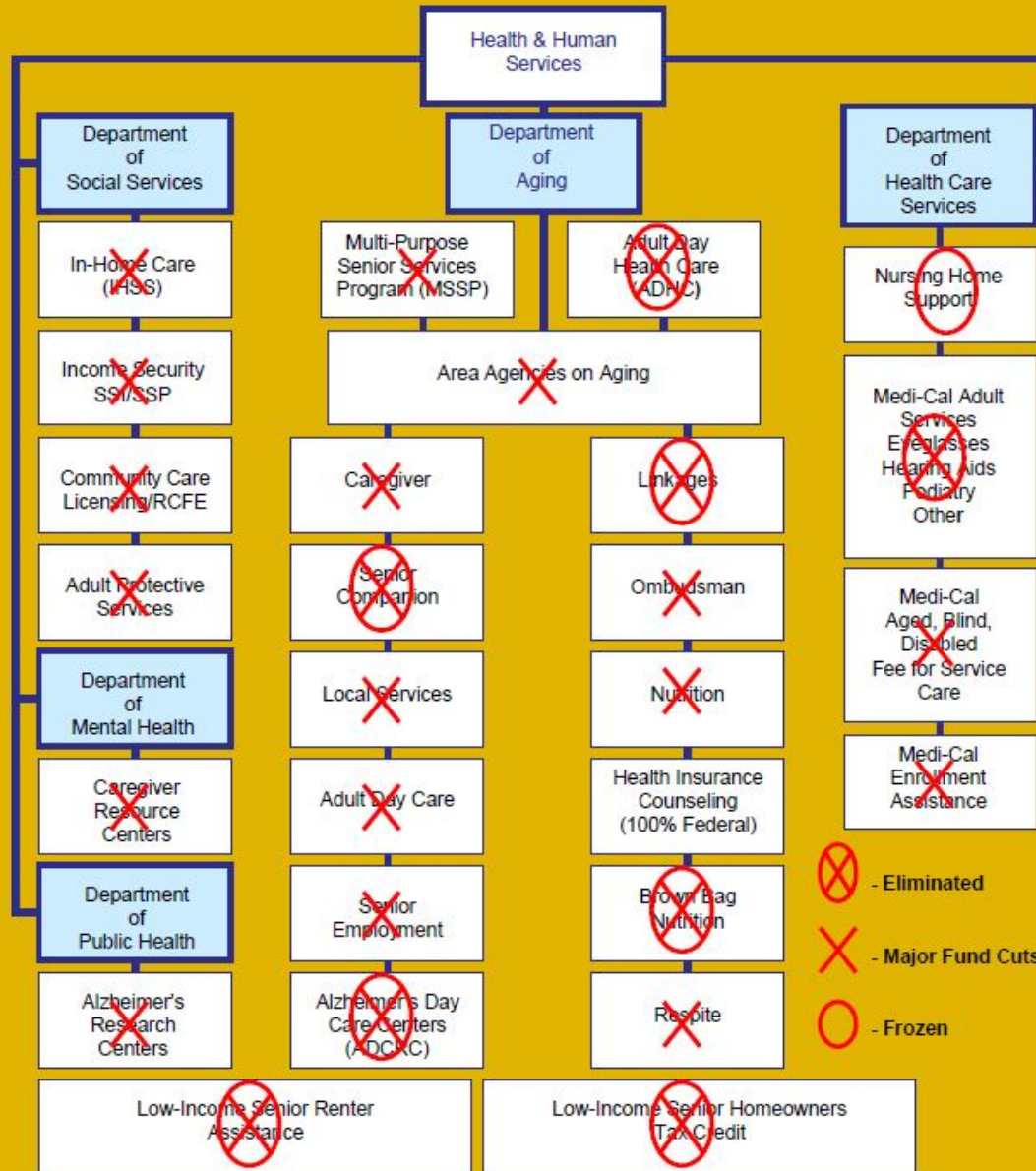


“The Sky is Falling”



# Congress of California Seniors

## New Challenges for the Aging Services Network



# Challenges

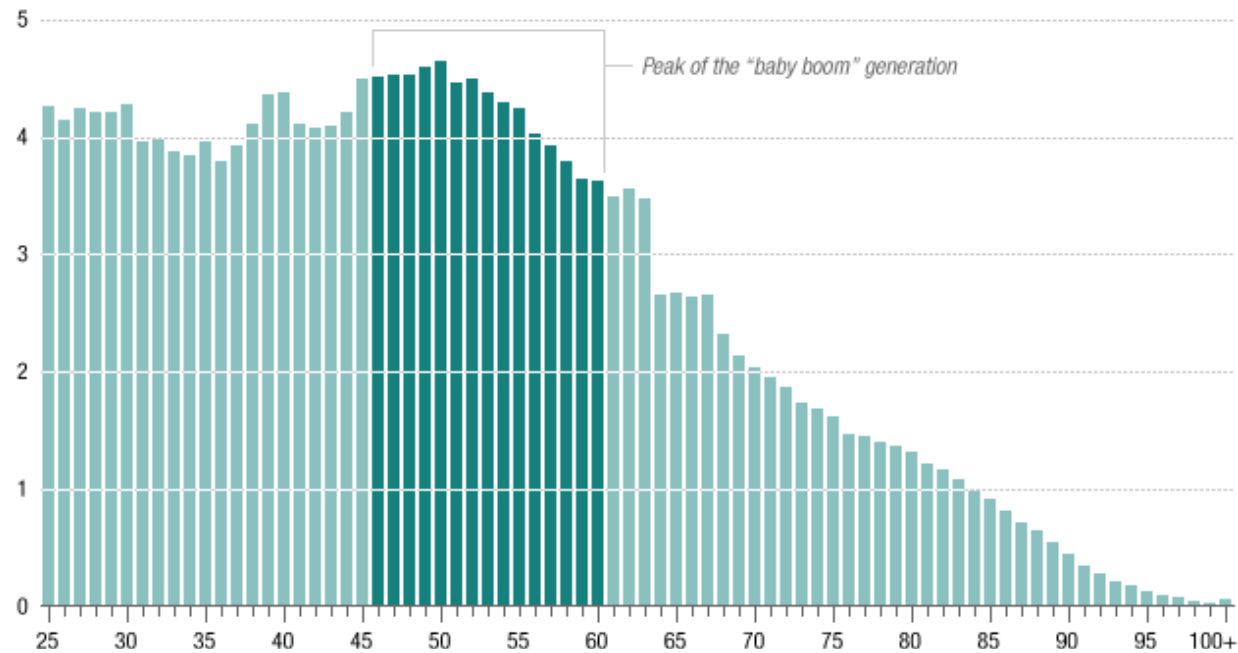
- ▶ System Fragmentation
- ▶ Lack of Capacity



# Challenges

- Lack of Data and Systemwide Planning
- Demographics and Longevity

Adult population in 2010 by age, in millions

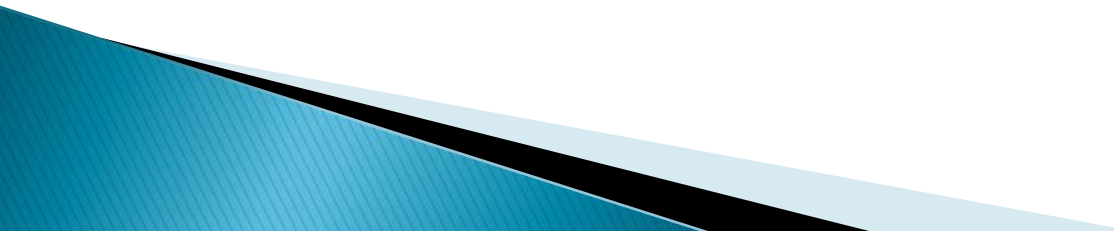


# Challenges

- ▶ Insufficient Workforce
- ▶ Local Level Struggles



# Other Influences

- ▶ No Wrong Door
  - ▶ Administration for Community Living
  - ▶ Elder Justice Act
  - ▶ Shift to Managed Care
  - ▶ Collaborations
  - ▶ Senate Select Committee
- 

- ▶ **California Commission on Aging**
- ▶ 1300 National Drive, Suite 173, Sacramento, CA 95834
- ▶ (916) 419 7591
- ▶ [www.ccoa.ca.gov](http://www.ccoa.ca.gov)
- ▶ [ccoa@ccoa.ca.gov](mailto:ccoa@ccoa.ca.gov)

Virgie P. Walker, CCoA Chair

Sandi Fitzpatrick, MA, Executive Director

**AGE. RIGHT. CALIFORNIA**